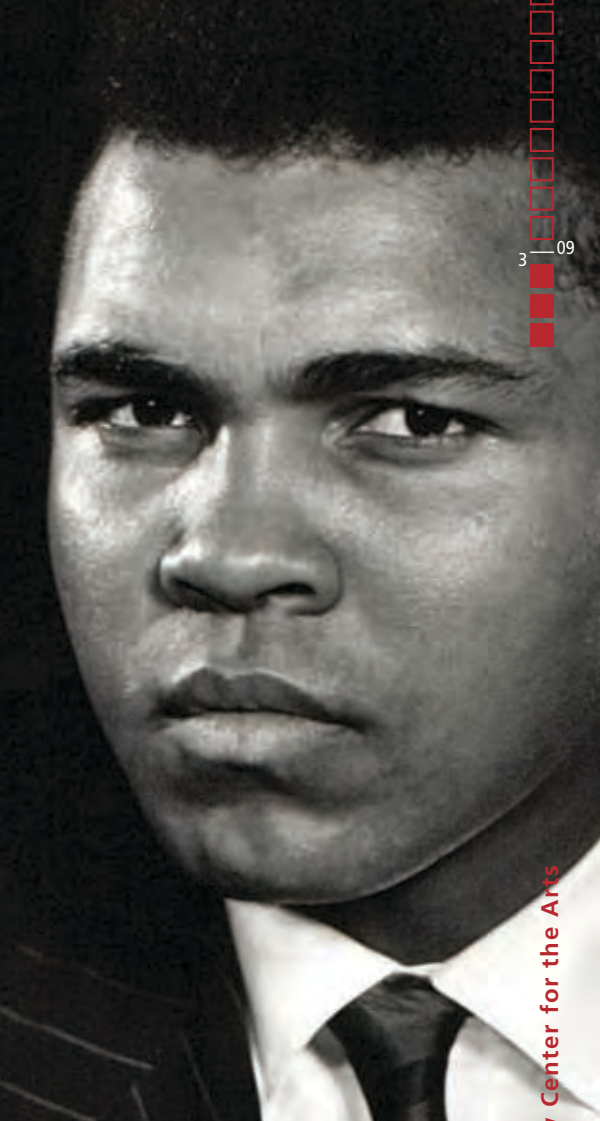


# arttalk



**FEATURE EVENT 3**  
50th Birthday Bash, Matinees: The Red Balloon and The White Mane

**EXHIBITIONS 4+**  
Constructing Identity from Hogarth to MySpace

**YOUNG PROFESSIONALS 7**  
Third Thursdays

**CALENDAR 8+**  
Events, Talks, and Films

DON'T MISS  
your chance to see

**RODIN**  
a magnificent obsession

on view through  
**APRIL 19.**



## Director's Message

**VISITORS TO THE RODIN: A MAGNIFICENT OBSESSION EXHIBITION MAY BE SURPRISED TO STUMBLE UPON CONSTRUCTING IDENTITY FROM HOGARTH TO MYSFACE IN THE PERMANENT EXHIBITION GALLERIES.** This new exhibit takes a hard look at what constitutes portraiture, both now and in the past. It is a fascinating look at how we observe one another, and ourselves, from the 17th century into the 21st. In addition, *Constructing Identity* recognizes the 50th anniversary of the LSU Museum of Art and launches a year-long celebration of programs, exhibitions and events.

The LSU Museum of Art opened its door in 1962 as the Anglo-American Museum in the Memorial Tower on the campus of LSU. The Museum and its collections were established through a gift to LSU in 1959 from an anonymous New York donor who wished to support an institution that would illustrate British and Continental influence on early American art and cultures in the South. It was an ambitious program, but the Museum successfully acquired key examples of British and American fine and decorative arts from the 17th to the 19th centuries.

As time passed, the collections grew in thematic scope and number. From the late 1960s on, the focus expanded to Louisianian—and Southern—decorative arts. The Museum amassed Louisiana paintings, furniture, silverware, and Newcomb pottery and crafts, as well as American and European decorative work. Recognizing that these additional collections were integral to the mission of the Museum, but incompatible with the name of the organization, the name was changed in 1992 to the LSU Museum of Art.

In 1998, J. Lucile Evans, an alumna of LSU, willed the LSU Foundation a cash gift to be used for the construction of a new building to house the Museum. This gift prompted a fundraising campaign and an eventual partnership with the Manship Theatre in order to create a truly world-class facility in downtown Baton Rouge. The Shaw Center for the Arts opened on March 5, 2005, to both critical and popular acclaim.

Because of the move, the LSU Museum of Art deliberately refocused its mission and audience to encompass a larger view of Baton Rouge and Louisiana. The galleries now present changing exhibitions, in-depth views of the permanent collection, educational programs for students and adults, films, performing art, and increasing outreach to both public and private schools. It has truly become a "Gateway for the University" to the community at large.

We hope that you will visit the new permanent gallery space and see for yourself. A lot has happened over the past 50 years, with a great deal more to come.

Thomas A. Livesay  
Executive Director  
LSU Museum of Art



*"...a "Gateway for the University" to the community at large..."*



## Feature Event

LSU MUSEUM OF ART



COME CELEBRATE 50 YEARS WITH US

### 50th Birthday Bash

Come celebrate with the LSU Museum of Art  
Saturday, March 21 7pm – 10pm  
\$50 for members, \$75 for non-members

**Third and Fifth Floors**  
Cocktails, hors d'oeuvres  
Caricature and portrait artists  
Cocktail Attire

*There will also be a children's party that evening!*



### Matinees: The Red Balloon and The White Mane

Join the LSU Museum of Art Sunday, March 15 for the double feature matinee showing of the 1956 short film, *The Red Balloon*, and the 1953 film, *The White Mane*.

*The Red Balloon*, filmed in the Ménilmontant neighborhood of Paris, France, follows the adventures of Pascal, a young boy, and his unusual friend, a red balloon.

*The White Mane*, filmed in the marshes of Camargue, France, tells a fable of how a young boy tames a wild white stallion named White Mane.



#### COVER IMAGES:

**LEFT: REMBRANDT PEALE** (American, 1778-1860), *Portrait of Governor John Hoskins Stone of Maryland* (1750 – 1804), 1797-1798. Oil on canvas, Anonymous Donor's Purchase Fund, LSUMOA 1960.13

**RIGHT: YOUSUF KARSH** (Canadian, b. Armenia, 1908-2002), *Muhammad Ali*, 1970. Silver gelatin print, Gift of William Richard and Judith Ann Smith, LSUMOA 2005.4.1.1. Photography: Kevin Duffy.

**BOTTOM: AUGUSTE RODIN** (French, 1840-1917), *The Thinker* (detail), modeled 1880, reduced in 1903, cast number and date of cast unknown, Alexis Rudier Foundry, bronze, 14 3/4 x 7 7/8 x 11 3/8 in. Iris and B. Gerald Cantor Foundation, promised gift to the North Carolina Museum of Art.

Not receiving e-mails about LSU Museum of Art upcoming events and promotions? Contact Chelsea H. Catlett, membership coordinator at [charr24@lsu.edu](mailto:charr24@lsu.edu); 225.389.7213.



# Constructing Identity

## FROM HOGARTH TO MYSFACE

The LSU Museum of Art began collecting paintings and, in particular, portraits in 1959. This year, the museum is commemorating its 50th anniversary with the installation *Constructing Identity from Hogarth to MySpace*. The exhibition begins with traditional portraits dating back to the 16th century and ends with contemporary images by artists Diego Rivera, Clementine Hunter, George Dureau, and Caroline Durieux. The collection highlights how important artistic connections between Sir Joshua Reynolds and Thomas Gainsborough in 18th-century England shaped the development of portraiture in the American colonies through artists such as Benjamin West.

After the American Revolution, artists were faced with a challenge: How best to represent a democratic society and its democratically elected leaders? Reynolds and his American student, West, drew on a long tradition of painting English kings, lords, and ladies, but American artists wondered, "What should an American president look like?" As we see in his early portrait of Maryland governor John Hoskins Stone, Rembrandt Peale used a formula that combined a three-quarter length portrait surrounded by symbols of the new democracy. Stone's uniform reminds us of the American battle for freedom. His

books remind us that his source of power is the law, not birthright or military domination.

**People  
construct  
IMAGES of  
THEMSELVES  
that endure  
through ART.**

During the 20th century, the proliferation of media outlets meant that portraits of the famous were seen by more people and thus had a greater potential impact. A public figure, like boxer Muhammad Ali, was careful to control his image. For his portrait by photographer Yousuf Karsh, Ali insisted that he be shown in a suit, not with his boxing gear. Hands on hips, he challenges the viewer with an attitude that recalls his adept, rhyming playfulness before his matches. While Karsh may have been dissatisfied with this pose, Ali had constructed the public image he wanted to project.

While most no longer sit for oil portraits in their finest dresses and suits, the popularity of the internet sites like MySpace or Facebook makes it clear that people are still constructing public images. When creating a MySpace page, you are asked to list statistics, such as your age and occupation. You are asked to list your favorites—books, music, movies—and you choose a profile picture that introduces your page to anyone who happens across it. The creation of a profile leads inevitably to a series of self-examining questions: Do you choose the picture taken at a party that shows your fun-loving side, the serious picture that represents you as a successful professional, or an image that isn't even your own likeness? Do you list all your favorite movies even if you prefer sophomoric comedies to intellectual art-house films? Who are you? Who do you want to be?

From the Elizabethan noblewoman to the Louisiana plantation worker, people construct images of themselves that endure through art.

Interested in having your MySpace page included in the *Constructing Identity* exhibition? We invite you to ask yourself the same questions people have asked for centuries. Email Victoria Cooke at [vcooke@lsu.edu](mailto:vcooke@lsu.edu).

**TOP LEFT: GEORGE PETER ALEXANDER HEALY** (American, 1813-1894), *Lady in a Black Gown*, oil on canvas, 1845. Gift of Mr. and Mrs. W.E. Groves, LSU MOA 60.2.3 **TOP RIGHT: KNUTE HELDNER** (Swedish-American, 1875-1952), *Colette on the Balcony*, oil on canvas, c. 1930. Gift of Dr. Mary Lynn Johnson Grant, LSU MOA 2005.1 **LEFT: CAROLINE WOGAN DURIEUX** (American, 1896-1989), *Calvaire*, color lithograph, 1951. Gift of the artist, LSU MOA 77.22.10 **MIDDLE RIGHT: WILLIAM HOGARTH** (British, 1697-1764), *Portrait of a Lady*, oil on canvas, c. 1740. Anonymous Donor's Purchase Fund, LSU MOA 59.2.2 **BOTTOM RIGHT: JUDY COOPER** (American), *Flamingo Cowboy*, hand-tinted silver gelatin print, 1996. From the collection of the artist, L2008.18

## Future Exhibitions

### Reunion: James Burke, Edward Pramuk and Robert Warrens

May 17 – August 9

When the United States emerged as an economic and political power in the 20th century, it also became central to the international art scene. In 1949, Jackson Pollock appeared in Life magazine, signaling a shift whereby New York became the art standard against which all other art would be measured.

During this time, many artists flocked to New York, but three artists in particular chose to make their marks in Louisiana. James Burke, Edward Pramuk, and Robert Warrens, each from northern states, chose to take their place in art history, not in the art center of New York, but in Baton Rouge, Louisiana. Reunion highlights works from these artists' tenure at LSU and includes some of their more recent creations.

Burke and Pramuk arrived at the Louisiana State University School of Art in 1965; Warrens arrived two years later. They taught painting, drawing, printmaking, and design throughout much of the 1970s, 1980s, and 1990s. Their works range in size and medium, but assuredly define each era with an accurate attention to current art trends. They are some of the most influential figures behind contemporary painting in Louisiana over the past four decades, and they continue to create in Southern Louisiana.



**TOP: JAMES BURKE** (b. Minnesota, 1935), *Way of the Cross*, 1957, etching on paper, ed. 3/10. Gift of Paul A. and Rita Dufour, LSU MOA 2001.3.6 Photo: Kevin Salzman. **MIDDLE: ROBERT WARRENS** (b. Wisconsin, 1933), *Lucifer Hovering*, c. 1990, silkscreen, ed. 160/400. The Michael Frederic Daugherty Collection, bequeathed by Andrea Mills Daugherty, LSU MOA 2008.2.23 Photo: Kevin Salzman. **BOTTOM: EDWARD PRAMUK** (b. Ohio, 1936), *Ascension*, 1973, acrylic on canvas. From the collection of the artist, L2008.12 Photo: Kevin Salzman.

## Also On Display

### Rodin: A Magnificent Obsession

Organized and made possible by the Iris & B. Gerald Cantor Foundation  
Open through April 19

*Rodin: A Magnificent Obsession* features more than sixty-five sculptures, from maquette-sized studies to monumental works, including *The Thinker*, *The Kiss*, *The Burghers of Calais*, and *The Gates of Hell*. The exhibition offers an exceptional opportunity to gain a rich impression of Rodin's passion for natural portrayal of the human figure. Among the features of this exhibit are the ten-piece, lost-wax casting process, portraits of the artist, and an award-winning video documenting the Cantor Foundation's commissioning of a casting of the *Gates of Hell*.

Don't miss your chance to experience the monumentality that is Rodin's art. Explore the emotional and the joyful, the tragic and the triumphant. Revel in the artist's rejection of tradition and his genius of invention. And discover the *magnificent obsession!*

**AUGUSTE RODIN**, *The Cathedral*, modeled 1908, Musée Rodin cast in 1955, edition size and cast number unknown, Georges Rudier Foundry, bronze, 25 1/4 x 12 3/4 x 13 1/2 in., Iris and B. Gerald Cantor Foundation, promised gift to the North Carolina Museum of Art.



### Also at the Shaw Center for the Arts

#### Alfred C. Glassell Jr. Exhibition Gallery

First Floor

For more info contact Malia Krolak, gallery coordinator for the LSU School of Art, at 225.389.7180; artgallery@lsu.edu.

#### Rachel Hayes: Site Specific Sculpture Installation

On display through March 29

#### David West: Printmaking MFA Thesis Exhibition

April 14-19; Reception: April 18, 6pm – 8pm

#### Tyler Mackie (Painting) and Mallory Feltz (Sculpture): MFA Thesis Exhibition

April 21-26; Reception: April 25, 6pm – 8pm

#### Frances Hu and Jennifer Mayer: Painting MFA Thesis Exhibition

April 28 – May 3; Reception: May 2, 6pm – 8pm

#### Japheth Storlie: Photography MFA Thesis Exhibition

May 5-16; Reception: May 9, 6pm – 8pm

## Young Professionals of LSU MOA

# 3<sup>rd</sup> Thursdays

*Third Thursdays are the best way to start your weekend early and start it off right!* Get ready to get down from 7pm–10pm every Third Thursday. Downtown Baton Rouge has never been hotter with live music and entertainment. Admission is only \$5 for LSU MOA members and \$10 for nonmembers. Price includes admission to entertainment on the 4th floor and the museum on the 5th floor. A cash bar will be provided with \$3 drink specials.



In-Kind: Whole Foods

### Mark these dates...

**March 19**

*Fleur de Tease*

New Orleans burlesque troupe sure to knock your socks off!

**April 16**

*Through the Looking Glass*

Curiosity about glass making makes us all mad!

**May 21**

*Innovación*

Jill Mulkey's innovative art comes to life around the spinning sounds of DJ Otto!

If you are interested in volunteering for Third Thursdays—whether it's greeting guests, selling memberships, or planning a Third Thursdays event of your own—we'd love your help! Volunteers receive free admission and recognition in our newsletter! For more information, contact Chelsea H. Catlett at [charr24@lsu.edu](mailto:charr24@lsu.edu); 225.389.7213.



[www.lsumoa.com/yyps](http://www.lsumoa.com/yyps)

Join the YPs and get the most out of your museum membership. It's just one more way to support the arts in Baton Rouge.

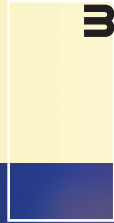
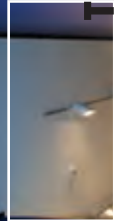


### The Young Professionals Are on MySpace!

Be the first to know about upcoming events, check out our party pix, meet new people, and find other great networks! Become our friend on MySpace! [www.myspace.com/lsumoa](http://www.myspace.com/lsumoa)

**1**  
Free First Sunday:  
Drawing Together,  
the Kinds of Lines  
Free Admission, Fifth Floor

**2**  
Museum Closed



**5**  
Open until 8pm



**S**

**9**  
Museum Closed



**12**  
Open until 8pm



**14**  
Shaw Center's Second  
Saturdays: Explore, Take  
and Make  
Free Admission, 10am – 2pm,  
Fifth Floor

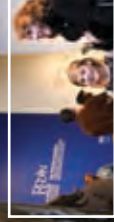
**15**  
Matinees:  
The Red Balloon and  
The White Mare  
ManSHIP Theatre, 2pm

**16**  
Museum Closed



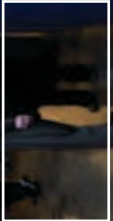
**19**  
Open until 8pm  
Third Thursdays: Fleur de Tease  
\$5 LSU MOA members, \$10 non-members,  
Fourth and Fifth Floors, 7pm-10pm

**21**  
50th Birthday Bash  
\$5 LSU MOA members,  
\$10 non-members,  
Third and Fifth Floors,  
7pm-10pm

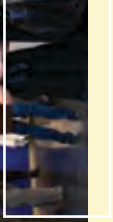


**28**  
The Edge of the Earth  
ManSHIP Theatre, 7pm

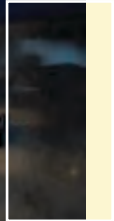
**23**  
Museum Closed



**26**  
Open until 8pm



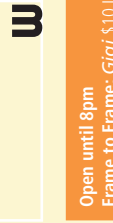
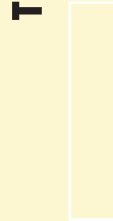
**30**  
Museum Closed



# MARCH

**5**  
Free First Sunday:  
Drawing Together,  
the Shapes of Shadows  
Free Admission, Fifth Floor

**6**  
Museum Closed



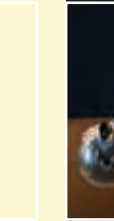
**9**  
Open until 8pm  
Frame to Frame: Gigi  
\$10 LSU MOA and Marship Theatre  
members, \$15 non-members, Fifth Floor and Marship Theatre,  
6pm reception, 7pm film showing



**S**

**19**  
Last day to see the  
exhibition Rodin: A  
Magnificent Obsession  
Fifth Floor, 1pm – 5pm

**13**  
Museum Closed



**16**  
Open until 8pm  
Third Thursdays: Through the Looking Glass  
\$5 LSU MOA members, \$10 non-members,  
Fourth and Fifth Floors, 7pm-10pm

**23**  
Open until 8pm



**S**

**30**  
Open until 8pm

**27**  
Museum Closed



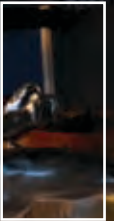
**3**  
Free First Sunday:  
Drawing Together,  
the Shapes of Everything  
We See  
Free Admission, Fifth Floor



**S**

**17**  
Reunion: James  
Burke, Edward Pramuk  
and Robert Warrens  
opens to the public  
Fifth Floor, 1pm – 5pm

**14**  
Open until 8pm



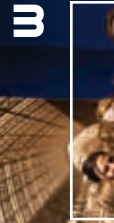
**21**  
Open until 8pm



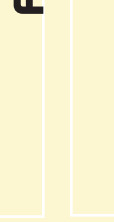
**S**

**3**  
Free First Sunday:  
Drawing Together,  
the Shapes of Everything  
We See  
Free Admission, Fifth Floor

**4**  
Museum Closed



**7**  
Open until 8pm



**S**

**17**  
Reunion: James  
Burke, Edward Pramuk  
and Robert Warrens  
opens to the public  
Fifth Floor, 1pm – 5pm

**11**  
Museum Closed



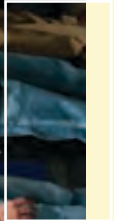
**14**  
Open until 8pm



**S**

**25**  
Museum Closed

**18**  
Museum Closed

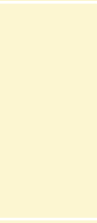
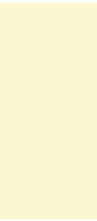


**21**  
Open until 8pm  
Third Thursdays: Innovación  
\$5 LSU MOA members, \$10 non-members,  
Fourth and Fifth Floors, 7pm-10pm

**28**  
Open until 8pm



**S**



# MAY

# APRIL

## Events

### MARCH

**1 Free First Sunday: Drawing Together, the Kinds of Lines** Free Admission, Fifth Floor Visitors of all ages will explore lines within Rodin's sculptures as a starting point for learning how to draw. Join us on the first Sunday of every month as we continue our art lessons using artworks from the LSU Museum of Art's collection and visiting exhibitions. Groups of 10 or more who would like to participate in the Drawing Together programs are encouraged to email education curator Lara Gautreau to make reservations, lgaut@lsu.edu.

**14 Shaw Center's Second Saturdays: Explore, Take and Make** Free Admission, Fifth Floor, 10am – 2pm How good is your memory? Find out as our new game challenges the memories of visitors, young and old. Bring a "Take-and-Make" bag home to create your own artwork inspired by your museum memory explorations! Supplies are limited and available on a first-come, first-served basis. Children must be accompanied by an adult who is prepared to provide assistance. Groups of 10 or more who would like to participate in the Second Saturdays programs are encouraged to email education curator Lara Gautreau to make reservations, lgaut@lsu.edu. This program is part of Second Saturdays at Shaw, sponsored through a grant from the Pennington Foundation.

**15 Matinees: The Red Balloon and The White Mane** Manship Theatre, 2pm Join the LSU Museum of Art Sunday, March 15 for the double feature matinee showing of the 1956 short film, *The Red Balloon*, and the 1953 film, *The White Mane*. *The Red Balloon*, filmed in the Ménilmontant neighborhood of Paris, France, follows the adventures of Pascal, a young boy, and his unusual friend, a red balloon. *The White Mane*, filmed in the marshes of Camargue, France, tells a fable of how a young boy tames a wild white stallion named White Mane.

**19 Third Thursdays: Fleur de Tease** \$5 LSU MOA members, \$10 non-members, Fourth and Fifth Floors, 7pm – 10pm The famous burlesque troupe from New Orleans makes its way to Baton Rouge for this one-of-a-kind show! Magicians, fire-eaters, comedians, aerialists and of course beautiful burlesque dancers all make up the core members of the troupe. Special guest artists such as sword swallowers, singers and other circus acts make each show a unique and different experience so no two programs are ever the same. Please join us and be prepared to thrill your senses. Price includes admission to the fourth and fifth floors, complimentary food and live entertainment. Cash bar will be provided. This program is sponsored by the Louisiana Lottery Corporation.

**21 50th Birthday Bash** \$50 LSU MOA members, \$75 non-members, Third and Fifth Floors, 7pm-10pm Come celebrate 50 years with the LSU Museum of Art. This event will include cocktails, hors d'oeuvres, caricature and portrait artists, a children's party, and so much more. Cocktail attire. For more information please contact the LSU Museum of Art at 225.389.7212.

**28 The Edge of the Earth** Manship Theatre, 7pm *The Edge of the Earth* is an evening of video, music and poetry. The event will premiere *Bird and Squirrel*, a 22 minute video piece created by Kelli Scott Kelley, whose works are on display in the *LSU: Past and Present* gallery at the LSU Museum of Art. The evening will also include the musical composition of William D. Kelley, poetry by artist Jacqueline Dee Parker, the voice of Zoe Parker, and music from Dennis Parker, Espen Lilleslatten and Tasha Warren.

**29 Everyone's a Critic: A Discussion** Free with Museum Admission, Fifth Floor, 2pm Rodin, one of the most celebrated sculptors in our history, was also one of the most criticized. How do artists deal with criticism, from the academic studio to the arts section of the newspaper? What role does criticism have in creating the art world we live in, in determining who "makes it" and who starves? How should students and professional artists prepare for and respond to criticism, whether it is constructive or the "my kid could have done that" variety? Doug MacCash, art critic for *The Times-Picayune*, and Rick Ortner, Professor of Painting at the LSU School of Art, will provide their insights and advice during this interesting discussion.

### APRIL

**5 Free First Sunday: Drawing Together, the Shapes of Shadows** Free Admission, Fifth Floor Using Rodin's sculptures, visitors of all ages will explore the shapes and values of shadows. Join us on the first Sunday of every month as we continue our art lessons using artworks from the LSU Museum of Art's collection and visiting exhibitions. Groups of 10 or more who would like to participate in the Drawing Together programs are encouraged to email education curator Lara Gautreau to make reservations, lgaut@lsu.edu.

**9 Frame to Frame: Gigi** \$10 LSU MOA and Manship Theatre members, \$15 non-members, Fifth Floor and Manship Theatre, 6pm reception, 7pm film showing *Gigi* is the musical film of a young Parisian girl being groomed for a career as a courtesan and her relationship with the wealthy cultured man who discovers he is in love with and eventually marries her. This program is made possible from the Al and Anne Rotenberg Family Fund of the Baton Rouge Area Foundation.

**11 Shaw Center's Second Saturdays: Explore, Take and Make** Free Admission, Fifth Floor, 10am – 2pm Visitors will explore galleries using new museum- and exhibition-inspired bingo boards. Bring a "Take-and-Make" bag home to create your own artwork inspired by your museum bingo explorations! Supplies are limited and available on a first-come, first-served basis. Children must be accompanied by an adult who is prepared to provide assistance. Groups of 10 or more who would like to participate in the Second Saturdays programs are encouraged to email education curator Lara Gautreau to make reservations, lgaut@lsu.edu. This program is part of Second Saturdays at Shaw, sponsored through a grant from the Pennington Foundation.

## Art in Action

**16 Third Thursdays: Through the Looking Glass** \$5 LSU MOA members, \$10 non-members, Fourth and Fifth Floors, 7pm – 10pm Step into a world of backwardness, curiosity and the one place where you don't have to grow up! Enjoy live music by a local band, glass demonstrations and complimentary food, and meet artists from *Alice's Wonderland*. Dress like your favorite character, if you feel creative, but whatever you decide, make sure you don't miss out or *off with your head!* Price includes admission to the fourth and fifth floors, complimentary food and live entertainment. Cash bar will be provided. This program is sponsored by the Louisiana Lottery Corporation.

**19 Last day to see the exhibition Rodin: A Magnificent Obsession** Fifth Floor, 1pm – 5pm *Rodin: A Magnificent Obsession* features more than sixty-five sculptures, including Auguste Rodin's most famous works, *The Thinker* and *The Kiss*. Don't miss your chance to experience the monumentality that is Rodin's art. Explore the emotional and the joyful, the tragic and the triumphant. Revel in the artist's rejection of tradition and his genius of invention. And discover the magnificent obsession!

### MAY

**3 Free First Sunday: Drawing Together, the Shapes of Everything We See** Free Admission, Fifth Floor Visitors will examine how shapes work together, creating everything around us. Visitors of all ages will practice looking for, drawing and combining shapes as we continue learning how to draw. Join us on the first Sunday of every month as we continue our art lessons using artworks from the LSU Museum of Art's collection and visiting exhibitions. Groups of 10 or more who would like to participate in the Drawing Together programs are encouraged to email education curator Lara Gautreau to make reservations, lgaut@lsu.edu.

**9 Shaw Center's Second Saturdays: Explore, Take and Make** Free Admission, Fifth Floor, 10am – 2pm Eye Spy people having a great time exploring the LSU Museum of Art! Visitors are challenged to Spy things like textures, colors, patterns and shapes. Pick up a "Take-and-Make" bag to create something at home inspired by your Spying! Supplies are limited and available on a first-come, first-served basis. Children must be accompanied by an adult who is prepared to provide assistance. Groups of 10 or more who would like to participate in the Second Saturdays programs are encouraged to email education curator Lara Gautreau to make reservations, lgaut@lsu.edu. This program is part of Second Saturdays at Shaw, sponsored through a grant from the Pennington Foundation.

**17 Reunion: James Burke, Edward Pramuk and Robert Warrens opens to the public** Fifth Floor, 1pm – 5pm James Burke, Edward Pramuk and Robert Warrens chose to take their place in art history,

not in the art center of New York, but in Baton Rouge, Louisiana. *Reunion* highlights works from these three artists' tenure at LSU and includes some of their more recent creations.

**21 Third Thursdays: Innovación** \$5 LSU MOA members, \$10 non-members, Fourth and Fifth Floors, 7pm – 10pm Jill Mulkey, local artist and designer, will display her fashionable artwork, including denim and tanks, on live mannequins! You'll also get to check out her innovative paintings that are sure to impress. Both clothing and art will be available for sale. DJ Otto will be spinning until the end of the evening... then finish your night off at the Red Star! Price includes admission to the fourth and fifth floors, complimentary food and live entertainment. Cash bar will be provided. This program is sponsored by the Louisiana Lottery Corporation.



## Family Programs

March 1, April 5 & May 3

**Shaw Center's**  
Second Saturdays Family programs:

March 14, April 11  
& May 4



# MOA News

## Volunteer Teen Guides – With a Night at the Museum Twist

The LSU Museum of Art is once again looking for energetic teens to make our summer programs possible. Working with advanced LSU students in art education and drama, our week-long training will help teens develop a character or two—bringing some of our artworks to life. They will also help create related gallery challenges for camp groups. Following this training, our Teen Guides are asked to donate one day per week for the majority of the summer to help guide visiting campers through the galleries and complete the challenges. This is for teens fourteen and up who are interested in being a part of a fun and educational summer volunteer opportunity. Teens must be

- fourteen or older
- able to attend the full week of training: June 1-5, 9am – 3pm
- able to volunteer one day per week for most of the rest of the summer
- comfortable speaking to groups
- able to provide own transportation and lunch

If you or someone you know is interested, please contact education curator Lara Gautreau at lgaut@lsu.edu; 225.389.7207.

### BEING A MEMBER JUST GOT BETTER...

Now enjoy a 10% discount at all Community Coffee Houses with your membership card!

## There Is an Easy Way To Give to the LSU Museum of Art!

Congress has extended the IRA Charitable Rollover through the end of 2009 as part of a financial bill, the Emergency Economic Stabilization Act of 2008, signed into law on October 3. The IRA Charitable Rollover is a tax incentive that allows individuals ages 70½ and older to donate up to \$100,000 from their Individual Retirement Accounts (IRAs) to public charities without having to count the distribution as taxable income. Since its enactment in August 2006, the IRA Charitable Rollover has generated a significant amount of new charitable giving. If you are interested in donating to the LSU Museum of Art, please contact Melissa Daly at 225.389.7212; mdaly@lsu.edu

## Annual Endowment Society Fall Gala

The Annual Endowment Society Fall Gala was held on November 6, 2008 at the home of Susan and Emile Rolfs. New members were welcomed as well as those who have contributed for 10 years! It was a momentous evening dedicated to the late Laura Boyce.

## Geraldine Fleniken "Jerry" Schwing

The holidays for 2008 were muted for the Museum with the passing of our friend and Advisory Board member, Jerry Schwing. To say that she will be missed seems grossly insufficient.

It was impossible to be around Jerry and not be energized, excited, and captivated by a life so large in such a small package. She was many things to many people, including a loving wife to Chuck Schwing. Jerry had a nursing degree from Louisiana College and a master's degree in education from LSU. She taught psychiatric nursing at LSU and once served as interim dean for the School of Nursing.

For the LSU Museum of Art, she served on the Advisory Board, bringing insight and extraordinary intelligence to each meeting. Jerry challenged other members of the Board to volunteer or contribute.

"Jerry Schwing was never passive," said Board Chair Linda Bowsher. "She always supported the things she believed in."

We were very honored and grateful to have Jerry Schwing as a member of the Advisory Board for the LSU Museum of Art. She will be greatly missed.  
- Tom Livesay

### Gifts in Memory of Geraldine Fleniken "Jerry" Schwing:

- Anet Insurance Trustees/ The Jeffs
- H.P. Bacot
- BWB Investments
- Jack and Sharon Field
- Linda and Fred Grace
- Julia R. Hamilton
- William Hines
- Shirley Jewell
- L.A. Champagne & Co., LLP
- Ellen and Henry Libby
- Laura and Wendell Lindsay
- Susan and Richard Lipsey
- Mary Jo Mayfield
- Mary and Charles McCowan
- Martha E. McCrory
- Military Road Pet Hospital
- Michael D. Robinson and Donald J. Boutté
- Dr. and Mrs. Richard H. Tannehill
- Dr. and Mrs. O.M. Thompson



## Thank You

### LSU MOA 2008 Corporate Members

- JP Morgan Chase
- Lee Michaels Fine Jewelry
- Public Systems Associates, Inc.
- Taylor Clark Gallery
- Whole Foods Market

### Rodin: A Magnificent Obsession Exhibition Sponsors

- JPMorgan Chase
- Consulate General of France in New Orleans
- The City Parish of East Baton Rouge
- Louisiana Division of the Arts
- Arts Council of Greater Baton Rouge
- Baton Rouge Area Convention and Visitors Bureau
- Kean Miller
- Belle of Baton Rouge Casino
- Sheraton Baton Rouge
- Chenevert Architects
- Gaupp-Wozniak Marketing and PR
- David and Jeanie Bondy Jr.
- John G. Turner and Jerry G. Fischer

### In-Kind Sponsor

- Baton Rouge Coca-Cola Bottling
- Whole Foods Market

### Media Sponsors

- Baton Rouge Area Convention and Visitors Bureau
- WBRZ Channel 2
- The Advocate
- Baton Rouge Metropolitan Airport
- Greater Baton Rouge Business Report
- 225 Magazine and 1012 Magazine
- KRVE 96.1 The River
- Country Roads Magazine
- The Riverside Reader

### Member's Reception Sponsors

- Whole Foods Market
- Baton Rouge Coca-Cola Bottling

### Frame to Frame Sponsor

- Al and Anne Rotenberg Family Fund

### Third Thursdays Sponsor

- Louisiana Lottery Corporation

### In-Kind Sponsor

- Whole Foods

### Directors Support Fund

- In Memory of Dolly A. Bonnette: Micheal D Robinson & Donald J. Boutté
- In Honor of Laura Lindsay: The Manship School and Reilly Center
- In Birthday Celebration of Bryan Murphy: Stafford Kendall

### General Support Fund

- Rev. Howard Hall
- Liz Hampton Fund of the Baton Rouge Area Foundation
- Elizabeth Lilly

### Newsletter and Design Sponsor

- Stun Design and Advertising

### Corporate Member and Sponsor Opportunities

Raise your corporate profile by sponsoring the LSU Museum of Art, or by becoming a Corporate Member. For more information contact Melissa Daly at 225.389.7212; mdaly2@lsu.edu



PLEASE PRINT

I AM ENCLOSING MY CONTRIBUTION OF \$ \_\_\_\_\_ DATE \_\_\_\_\_

DONOR'S NAME \_\_\_\_\_

DONOR'S ADDRESS \_\_\_\_\_

IN HONOR OF \_\_\_\_\_

IN MEMORY OF \_\_\_\_\_ IS THIS DEATH RECENT?  Yes  No

ACKNOWLEDGE TO \_\_\_\_\_

ADDRESS \_\_\_\_\_

HOW IS HONOREE/DECEASED RELATED TO YOU? \_\_\_\_\_

HOW IS HONOREE/DECEASED RELATED TO RECIPIENT OF ACKNOWLEDGEMENT? \_\_\_\_\_

### Payment Options pick one

MY CHECK FOR \$ \_\_\_\_\_ IS ENCLOSED. MAKE CHECK PAYABLE TO: THE LSU FOUNDATION.

PLEASE CHARGE \$ \_\_\_\_\_ TO MY:  AMERICAN EXPRESS  DISCOVER  MASTER CARD  VISA

ACCOUNT # / EXPIRATION DATE \_\_\_\_\_

NAME AS IT APPEARS ON CARD \_\_\_\_\_

SIGNATURE \_\_\_\_\_

The LSU MOA Support Fund provides a means for giving memorial and special gifts in recognition or remembrance of loved ones and friends. This is a wonderful way to honor someone on a special occasion, for a personal achievement, or for a life milestone. Contributions to the fund can be submitted via the Support Fund Form or by contacting the Development Office at 225.389.7213.

# Make Your Move. Join the LSU Museum of Art Today!

Annual membership in the LSU Museum of Art provides major support for museum exhibitions, educational programs, and the research, conservation, and expansion of the permanent collection.

All LSU MOA members receive free admission to the museum, a 20% discount on Museum Store purchases, the quarterly newsletter *ArtTalk*, discount to programs and invitations to special events. Members are invited to special exhibition previews and members' receptions. Members also receive a 15% discount on meals at the Capital City Grill for both locations, a 10% discount on meals at Tsunami, a 10% discount at all Baton Rouge area Community Coffee Houses and a free upsize on coffee purchases at PJ's Coffee, Shaw Center for the Arts.

MEMBER NAME & TITLE Write name as you wish it to appear in our records and acknowledgments:

ADDRESS

EMAIL

PHONE: HOME & WORK

- Yes!** I would like to join the Young Professionals of the LSU MOA, to help promote art and culture in Baton Rouge. CHECK TO RECEIVE AN EMAIL INVITATION TO OUR NEXT MEETING

#### Payment Options PICK ONE

- My check for \$ \_\_\_\_\_ is enclosed. Make check payable to: The LSU Foundation.
- Please charge \$ \_\_\_\_\_ to my:
- AMERICAN EXPRESS    VISA
- DISCOVER    MASTER CARD
- ACCOUNT # \_\_\_\_\_
- EXPIRATION DATE \_\_\_\_\_
- NAME AS IT APPEARS ON CARD \_\_\_\_\_
- SIGNATURE \_\_\_\_\_

For more information contact Chelsea H. Catlett at 225.389.7213; charr24@lsu.edu

#### Return form and payment to:

LSU Museum of Art  
Membership Office  
Shaw Center for the Arts  
100 Lafayette Street  
Baton Rouge, LA 70801

LSU faculty and staff receive a 10% discount on individual through benefactor level memberships.

\* NARM benefit allows members at the Patron level and above to receive reciprocal membership privileges at over 150 museums, gardens and historical sites throughout North America. Please refer to our website, [www.lsu.edu/sumoa](http://www.lsu.edu/sumoa) for a complete listing of participating sites.

#### LSU MOA Staff

Tom Livesay, Executive Director  
Victoria Cooke,  
Assistant Director for Curatorial Affairs  
Frances R. Huber, Assistant Director for  
Collections Management  
Becky Adams, Administrative Coordinator  
Melissa Daly, Director of Development  
Chelsea Harris Catlett,  
Membership and Data Coordinator  
Reneé B. Payton, Marketing Director  
Lara Gautreau, Education Curator  
Natalie Mault, Assistant Curator  
Misty Taylor, Loans and Collections Registrar  
Kevin Salzman, Preparator  
LeAnn Russo, Museum Store Manager

#### Board Members

Chair: Linda Bowsher  
Secretary/Treasurer: Cornelius Lewis  
Past Chair: Susan Lipsey  
Mark Bensabat  
Brenda Berg  
Marvin Borgmeyer  
Emalie Boyce  
David Cronrath  
Sue Anne Cox  
Heather Day  
Cheryl McKay Dixon  
Mary Frey Eaton  
Sharon Field  
Natalie Fielding  
Ashley Fox-Smith  
Eugene Groves  
Jeffery McLain  
Katherine Ragland  
Alison Rodrigue  
Jerry Schwing  
Honorary: Nadine Carter Russell  
Ex-Officio: Tom Livesay  
Emerita: Sue Turner

#### Admission

Adults: \$8, Seniors 65+ and students with I.D.: \$6  
LSU faculty /staff with I.D.: \$6  
Children 5 to 17: \$4  
Children under 5: Free

#### Hours

Tues - Sat: 10 am to 5 pm  
Thurs: 10 am to 8 pm  
Sun: 1 pm to 5 pm  
First Sunday of the Month: Free  
Closed Mondays, Thanksgiving Day,  
Christmas Eve, Christmas Day,  
and All Major Holidays



#### LSU Museum of Art Shaw Center for the Arts

100 Lafayette Street  
Baton Rouge, LA 70801  
225.389.7200 (general)  
225.389.7210 (Museum Store)  
[www.lsu.edu/sumoa](http://www.lsu.edu/sumoa)

## Museum Store

LSU MOA Museum Store 100 Lafayette Street, Baton Rouge, LA 70801 225.389.7210

# The LSU MOA Museum Store

– the perfect place for that unique gift!



The LSU MOA Museum Store offers an eclectic mix of gifts based on works of art in the collections and from past and current exhibitions. We offer a variety of unique gifts, including children's toys, ceramics, museum publications, decorative objects, scarves, books, jewelry, original artwork, stunning glass, and so much more.

The art of VeRetta Garrison-Moller is the LSU MOA Museum Store's newest addition, with a range of works from originals and giclees, to greeting cards and miniatures. Reminiscent of the fabric of her life, each work possesses the unusual depth and contrast that discriminating art connoisseurs seek.

For that one-of-a-kind gift they'll treasure always, visit the LSU MOA Museum Store today!

Don't forget, members receive a **20%** discount on all purchases.



#### TO BUY TICKETS

ONLINE  
[www.manshiptheatre.org](http://www.manshiptheatre.org)  
BY PHONE  
(225) 344-0334





LSU Museum of Art | Shaw Center for the Arts



100 Lafayette Street  
Baton Rouge, LA 70801

# *The Red Balloon and The White Mane*

Sunday, March 15  
Manship Theatre, 2pm

A Partnership between  
Manship Theatre and LSU Museum of Art

This program is brought to you  
by the Al and Anne Rozenberg  
Family Fund of the Baton Rouge  
Area Foundation.

