



art *talk*

LSU MUSEUM OF ART NEWS

VANISHING WETLANDS:

Two Views

02 Looking PAGE Forward: 2006

The LSU MOA team is busy researching future exhibitions, moving the collection from campus to the new Shaw Center for the Arts facility, and planning future programs.

07 Upcoming PAGE Exhibitions

Join us Saturday, October 8, for the opening public reception of *Vanishing Wetlands: Two Views*, featuring the work of prominent Baton Rouge artists C.C. Lockwood and Rhea Gary!

12 Education PAGE and Events

Our Coast: Communicating a Complex Story presents Mike Tidwell, C.C. Lockwood and Mark Schleifstein in a lively dialogue about the social and economic impacts of coastal erosion, Sunday, Nov. 13, 2pm.



Looking Forward: 2006 Exhibitions, Collections & Programs

TOP: Archaistic (*fanguu*) bi disc, Early Ming, 14th–15th century, nephrite with wood stand, gift of Dr. James R. and Ann A. Peltier, 2002.17.9. Photography: David Humphreys

FRONT COVER TOP:
C.C. Lockwood, *America's Wetland*, Terrebonne Parish, 2004, color photograph, 39 x 29 in., collection of the artist. Photography: C.C. Lockwood

FRONT COVER BOTTOM:
Rhea Gary, *Silent Pickets*, 2004, oil on canvas, 40 x 36 in., collection of the artist. Photography: David Humphreys

AFTER THE LSU MUSEUM OF ART MOVED to the Shaw Center for the Arts last March, we immediately launched into the routine business of museums — presenting rotating exhibitions and education programs, conducting group and school tours, and generating exciting special events and fundraisers. The museum's first spring and summer season in the downtown core was highly successful. New visitors were introduced to the museum through *River Views & Vibes*, our winning partnership with the Baton Rouge Symphony and Tsunami, graciously underwritten by Merrill Lynch. The 4th of July Fundraiser drew many who supported the museum's efforts to raise funds for future education programs.



Behind the scenes, museum staff busily planned the future. The collection management team, Fran Huber, registrar, Bobbie Young, assistant registrar, and Nathaniel Lakin, preparator, relocated the permanent collection from various storage sites on the LSU campus to the new state-of-the-art storage space where it is now accessible to researchers and students.

While organizing *Vanishing Wetlands: Two Views*, our featured fall exhibition, the curatorial team of Donna McAlear, deputy director, Fran Huber and Lara Gautreau, education curator, aided by Jacob Balfantz and Danelle Augustin, curatorial interns, researched and scheduled upcoming exhibitions for the Paula Garvey Manship Floor galleries. In 2006 the museum will feature new collection acquisitions on a regular basis. Watch for a special installation of Conrad Albrizio's *New Orleans Union Passenger Terminal Sketches* in January, a recent addition to our existing collection of work by this esteemed Louisiana artist and

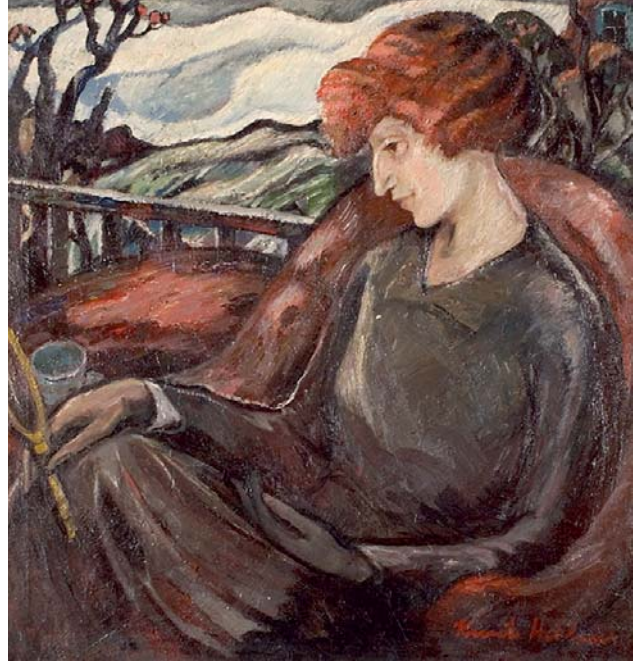
former LSU School of Art faculty member. *William Beecher: A Fantastic Vision*, opening in March, is a showcase of hundreds of intricate and colorfully rendered paintings by this accomplished outsider artist. Beecher spent the last years of his life in the 1970s at Villa Feliciana hospital in Jackson, Louisiana. Two significant private collections will be highlighted later in 2006, the Jack and Sharon Field collection of Native American art and the Dr. James R. and Ann A. Peltier collection of Chinese jade.

We trust you will enjoy the variety of artwork and events that the LSU Museum of Art has to offer, and return, often.

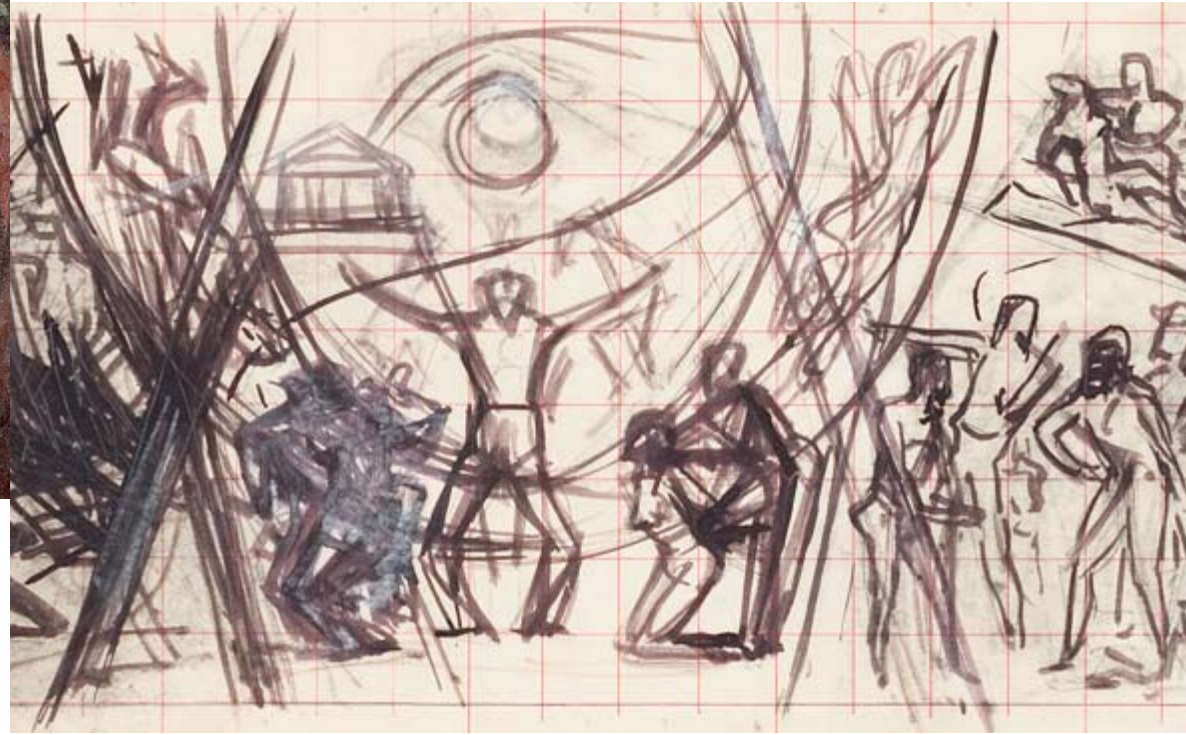
Laura F. Lindsay
Interim Executive Director

William Beecher
(American, 1902–1977), *Untitled*, ca. 1971–77, mixed media on paper, collection of the Department of Health and Hospitals, State of Louisiana. Photography: Jim Zietz

LSU Museum of Art Accessions Committee News



Knute Heldner
(Swedish-American, 1886–1952), *Collette on the Balcony*, ca. 1930, Oil on canvas, Gift of Dr. Mary Lynn Johnson Grant, 2005.1. Photography: Kevin Duffy



The LSU Museum of Art Accessions Committee, chaired by Michael D. Robinson, includes Sue Turner, LSU MOA Advisory Board chair; Natalie Fielding, LSU MOA Advisory Board member; and Dr. Marchita B. Mauck, professor and associate dean, LSU School of Art. Museum staff Dr. Donna McAlear, deputy director, and Frances Huber, registrar, work with the committee making recommendations on permanent collection acquisitions and other collection management matters.

The Accessions Committee recently accepted works by two significant Louisiana artists, Knute Heldner and Conrad Albrizio. These new acquisitions will aid in developing the museum's twentieth-century art collection, a key area of focus for the museum in coming years.

A painting by Knute Heldner was given to the museum by Dr. Mary Lynn Johnson Grant, a specialist in English Romantic poet-

ry who taught at LSU from 1960 to 1962. Heldner's son, Franz, was one of her students. Dr. Grant retired from the University of Iowa in 2000. Heldner's papers are held by the LSU Libraries Special Collections, another reason Dr. Grant chose to give this special painting to the museum.

Knute Heldner was born in Sweden and immigrated to the United States around 1902. He lived in Minnesota before settling in New Orleans in the mid-1920s. Heldner, an enthusiastic promoter of the arts, was part of a group of artists and writers who gathered in the French Quarter in the 1920s and 1930s. He belonged to many arts organizations and taught at the New Orleans Art School, established by the Arts and Crafts Club.

The painting depicts Heldner's wife, Collette Pope Heldner, also an artist, after the death of one of the Heldners' children. Collette sits lost in thought on a New Orleans

balcony. Heldner painted in a background reminiscent of the Minnesota landscape, his former home. *Collette on the Balcony* pairs well with another recent acquisition. *Heldner and Collette*, a likewise moody portrait of Heldner and his wife, was transferred to the museum from the Special Collections of LSU Libraries in late 2004.

Another recent acquisition is a series of 22 drawings by Conrad Albrizio. They are study sketches for the fresco murals that Albrizio painted at the New Orleans Union Passenger Terminal (UPT). In 1954, the UPT replaced five depots that had been scattered around the city. Albrizio, assisted by James Fisher, painted the UPT's murals. They depict the history of Louisiana in four panels representing the ages of exploration, colonization, conflict and the modern age. These Albrizio sketches for the UPT fresco murals build on the museum's current holdings of the artist's studies for murals at the Old State Capitol building.

Conrad Albrizio was born in New York City and moved to New Orleans in 1920. Albrizio, who is best known for his murals in public buildings, began his career as an architectural designer. In New Orleans, he became involved with the same group of artists and writers that included Knute Heldner. In 1923 he traveled to Europe to study fresco painting. His knowledge of European frescoes served him well; during the 1920s, he began to paint murals funded through the Federal Works Progress Administration (WPA) in New York, Detroit, Alabama and Louisiana. Governor Huey P. Long commissioned Albrizio to paint the murals in the Louisiana State Capitol. Albrizio taught art at LSU from 1935 until his retirement in 1954.

Conrad Albrizio (American, 1894–1973), Study drawing for New Orleans Union Passenger Terminal fresco *Age of Exploration*, detail, *Indian Civilization*, pencil and ink on paper, ca. late 1940s, early 1950s, purchased in part with funds given by Lucy D. Robinson and Michael D. Robinson, 2005.2.1 Photography: Kevin Duffy

Exhibitions

Vanishing Wetlands: Two Views

Vanishing Wetlands: Two Views C.C. Lockwood and Rhea Gary

Organized by the LSU Museum of Art
October 8, 2005 to February 19, 2006
OPENING PUBLIC RECEPTION:
Saturday, October 8, 7:30 pm

V*anishing Wetlands: Two Views* illustrates the passion that two Baton Rouge artists share for the restoration of Louisiana's eroding coast and their desire to heighten public awareness. The exhibition exposes the scientific, social and political impacts of this environmental loss. It brings to light a glaring paradox — what we see and understand to be a “picturesque” view of the wetlands region is greatly at odds with the vast coastal deterioration that occurs underwater, hidden from view but well known to scientists.

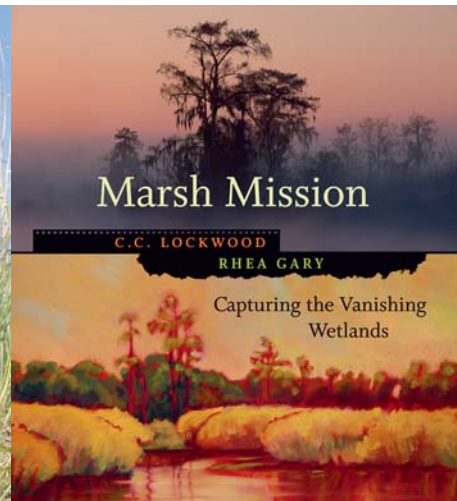
The exhibition presents the documentary wildlife and wetlands photography of C.C. Lockwood, a naturalist who has recorded the life of the rivers, bayous and marshes of South Louisiana for almost 30 years. It tracks episodes from his recent 2004 project, *Marsh Mission*. Lockwood spent a year touring the coastal waters on a houseboat, the *Wetlands Wanderer*. His artistic collaborator, painter Rhea Gary, used her own small boat. They documented the wetlands and its inhabitants to bring attention to a significant yet rapidly vanishing ecological and economic zone.

Lockwood's photographs and Gary's paintings about this issue are timely; they are part of a larger state and national effort to bring attention to the phenomenon of coastal erosion, restoration and management. For instance, *Coast 2050: Toward a Sustainable Coastal Louisiana* is a strategic

plan that was adopted in 1999 and is supported by all coastal parishes, the state of Louisiana and five federal agencies. *Plan Coast 2050* aims to sustain a coastal ecosystem that values the natural ecosystem by restoring the ecosystem to the highest practicable acreage of productive and diverse wetlands. Louisiana is home to 25 percent of the nation's coastal wetlands and 40 percent of the nation's salt marshes (excluding Alaska), including the only significant delta ecosystem in North America, the Mississippi River delta.

Vanishing Wetlands: Two Views shows how coastal erosion affects the future of life in Louisiana to ask: What can individuals do to arrest this plight? Lockwood and Gary will present 30 works each from their *Marsh Mission* project. They have collaborated with the museum's exhibition team — Donna McAlear and Lara Gautreau, LSU MOA, and G. Paul Kemp, director, Natural Systems Modeling Laboratory, School of the Coast and Environment at LSU — to create a lively and educational visitor experience. Team members have received support from the Laboratory for Creative Arts and Technologies at LSU, the US Geological Survey, *America's Wetland Campaign* to Save Coastal Louisiana, Louisiana Public Broadcasting and Mark Davis, Coalition to Restore Coastal Louisiana. Historical, economic, political and scientific interpretations of the phenomenon of coastal erosion, restoration and management are highlighted in a variety of ways, using artworks, maps and information panels, and various multi-media presentations about the lifeways, cultures, economics and environment of the coast.

Rhea Gary, *Cloud Cover*, 2004, oil on canvas, 48 x 36 in., collection of the artist. Photography: David Humphreys



C.C. Lockwood is one of the nation's outstanding nature and wildlife photographers and the premier chronicler of the natural wonders of Louisiana and the Gulf region, including the Yucatan peninsula. He is also the recipient of the Sierra Club's Ansel Adams award for outstanding conservation photography. Lockwood's photographs are held in many private, museum and corporate collections. Most recently he was honored as a *Louisiana Legend* by the Louisiana Public Broadcasting Corporation.

A native of Louisiana, Rhea Gary holds a Bachelor of Science and a Masters of Fine Arts from LSU. She studied at the New Orleans Academy of Fine Arts and in special programs in the United States, France, Ireland and Italy. Her canvases weave a fabric as seamless as the Louisiana waterways she loves. Gary has been honored with numerous awards and her artwork has been shown in many museums. Her artwork is held in government and private collections around the world.

A case-bound, 110-page, full-color book authored by C.C. Lockwood and Rhea Gary — *Marsh Mission: Capturing the Vanishing Wetlands* (Baton Rouge: LSU Press, 2005) — accompanies this exhibition. It is available for purchase in the Museum Store for \$39.95.

The LSU Museum of Art thanks Shell, the prime sponsor of *Vanishing Wetlands: Two Views*, for generously supporting the exhibition production, its guest speaker programs, and the 2006 exhibition tour to Louisiana museums.



TOP FROM LEFT TO RIGHT
C.C. Lockwood, 2004, color photograph, *Dangerous Afternoon*, Lafourche Parish, 20 x 30 in., collection of the artist. Photography: C.C. Lockwood

C.C. Lockwood and Annie, the Marsh M.U.T.T.

Marsh Mission book, available in the LSU MOA Museum Store for \$39.95.

LEFT
 Rhea Gary, painter

We also thank our associate sponsors of *Vanishing Wetlands: Two Views*. Chase sponsored the framing of the artworks for the exhibition. Jones Walker, LLP is the sponsor of the opening public reception.



The LSU Museum of Art Endowment Society

History of the Endowment Society

The LSU Museum of Art Endowment Society was established in 1999 by museum supporters who wanted to ensure long-term sustenance for the care and growth of the permanent collection. Founding members pledged \$1,000 a year for 10 years. Annual donations are deposited directly into an endowed fund managed by the LSU Foundation. When the fund reaches one million dollars, only the interest will be used for collection conservation and new acquisitions.

In addition to the standard benefits of membership, Endowment Society members receive permanent recognition on the Endowment Society donor wall on the Paula Garvey Manship Floor of the museum. They are invited to the annual "members only" party that is graciously hosted at the home of a different museum supporter each year.

Lifetime members who have generously contributed \$10,000 to the Endowment Society are John Barton Sr., Laura and Clark Boyce, Mrs. L. Heidel (Imo) Brown and Anne and Bill Hise.

Susan Lipsey is the capable and enthusiastic chair of the LSU MOA Endowment Society. She was raised in New Orleans and moved to Baton Rouge after marrying her husband, Richard Lipsey. She is an avid community volunteer who is passionate about her involvement with many community organizations. In addition to being a member of the LSU MOA Advisory Board and its Endowment Society chair, Lipsey's significant work with the Mary Bird Perkins Cancer Center

LSU Museum of Art Welcomes New Board Members

The LSU Museum of Art Advisory Board Membership Committee, led by Phillip Juban, nominated new members at the spring 2005 meeting. Names of the nominees were submitted to Chancellor Sean O'Keefe for appointment to the board. All nominees were delighted with their appointments, and the museum looks forward to their future contributions.

The LSU MOA Advisory Board welcomes Brenda Berg, Marvin Borgmeyer, Carolyn Heard, Carol Lamar, Charles McCowan and Nancy Robichaux.



Susan Lipsey, Chair, Endowment Society



Leonard Wyatt, Chair Development

Lipsey and the museum thank Leonard Wyatt, city president of AmSouth Bank, for generously underwriting the Endowment Society party invitation packet. Wyatt has also donated his time and leadership skills to the museum by serving on the LSU MOA Advisory Board

has spanned more than 35 years. In recent years, she has served as a board member of Swine Palace Productions, a non-profit, professional Equity theatre company producing in association with the Department of Theatre at LSU. Lipsey and her husband are zealous fans of the LSU Tigers; the couple actively supports the Tigers, whether they are playing football, basketball or baseball. Lipsey was proud to chair the ribbon cutting ceremony and reception for the new University High School building last August.

Endowment Society Party

**Save the Date:
Tuesday, October 4, 2005**

Susan Lipsey and the museum's development office worked through the summer to prepare a fabulous 2005 Endowment Society party. This year Endowment Society members will be graciously hosted by Dana and Jim Bernhard at their Highland Road home.

as development chair for the past two years.

For information about joining the LSU MOA Endowment Society, contact Kelly Lastrapes, director of development: 225.389.7212; klast@lsu.edu.

4th of July Fireworks Fundraiser a Success!

The LSU Museum of Art's 4th of July fundraiser was a tremendous success. More than 150 guests celebrated with LSU Chancellor Sean O'Keefe and his special guests, Dr. and Mrs. Leroy Chiao. Dr. Chiao is commander of Expedition-10, Mission to the International Space Station.

Guests enjoyed a delicious barbecue on the third-floor Bert and Sue Turner Gallery and toured LSU MOA's newest exhibition, *Currents of Change*, on the Paula Garvey Manship Floor. As evening descended, guests moved up to the Irene W. Pennington Rooftop Terrace to watch the fireworks.



"This is best view of the fireworks show in town," commented Mayor Kip Holden.

"We are thrilled with the response," stated Laura Lindsay, LSU MOA interim executive director. "We started a great event that will become an annual tradition for the museum."

The LSU MOA thanks River Place Condominiums, *The Advocate*, Michael D. Robinson, EMCO Technologies and the LSU Foundation for their generous support of this special event. Thanks are also due to the many guests who attended. Funds raised from this event — over \$11,000 — will support the museum's educational programs.

LSU Museum of Art Naming Opportunities

A naming gift to the LSU Museum of Art provides a highly visible and lasting tribute to individuals whose extraordinary contributions deserve recognition and commemoration. The new museum has numerous opportunities for naming art gallery spaces, dining areas, sculpture gardens and administrative areas. The various opportunities include naming one of twelve leather benches in the museum galleries (at \$5,000 per bench) to naming educational equipment for \$15,000. The museum's library shelving system and office spaces can be named with a gift of \$50,000 each. Five magnificent galleries on the Paula Garvey Manship Floor can be named with a gift of \$100,000, \$200,000 and \$250,000 each, depending on size. Endowment opportunities range from \$25,000 to \$250,000. All gifts can be made outright or paid over several years.



Gift Opportunities

Thanks to the generosity of two patrons, the LSU Museum of Art now has wheelchairs on site to aid visitors who need assistance during their tour of the museum. The museum offers special thanks to Todd Rhodes, president and partner of The Mobility Depot, for his donation of a motorized wheelchair and two manual wheelchairs. "We are happy to make this gift so that everyone, regardless of their physical abilities, can have a chance to visit and enjoy all that the LSU Museum of Art and the Shaw Center for the Arts have to offer," stated Rhodes. An additional wheelchair was donated to the LSU MOA by Tom Fletcher in memory of M. Dorothy Fletcher.

In-kind gifts to the museum are always welcome. Currently the museum seeks the following in-kind gifts: a cargo van for the exclusive transport of art; office furniture and audio-visual equipment. If you or your company has a product or service that you think will benefit the museum's daily operation, contact Kelly Lastrapes, director of development: 225.389.7212; klast@lsu.edu. Kelly can provide you with the museum's wish list.



1. Michael Robinson, LSU MOA Advisory Board member, Lucy Dupree Robinson, Nadine Carter Russell, honorary LSU MOA Advisory Board member, and Frederick Ortnier, LSU School of Art at the 4th of July fundraiser.

2. Guests of honor LSU Chancellor Sean O'Keefe and NASA astronaut Dr. Leroy Chiao frame the Chancellor's NASA spacecraft ejection chair at the 4th of July fundraiser.

3. Chancellor O'Keefe chats with Bert Turner in the Bert and Sue Turner Gallery (third floor), LSU MOA.

4. Celebrating the 4th of July fundraiser are Norman A. Deumite, Mayor Kip Holden and LSU System President Bill Jenkins.

5. LSU MOA Interim Executive Director Laura Lindsay with Baton Rouge Mayor Kip Holden enjoy the 4th of July in style.

River Views & Vibes

Vanishing Wetlands Public Programs



Speaker Programs are free to the public, thanks to the sponsorship of Shell.



The Marsh Mission Story

Artists C.C. Lockwood and Rhea Gary discuss the project that led to the making of the *Vanishing Wetlands: Two Views* exhibition.

Sunday, Oct. 9, 2:00–3:30 pm
Location: Manship Theatre, Shaw Center for the Arts

Wildlife and wetlands photographer C.C. Lockwood and landscape painter Rhea Gary recount their personal stories of the *Marsh Mission* project. Lockwood and Gary spent a year touring the coastal waters. Their book, *Marsh Mission: Capturing the Vanishing Wetlands* is on sale in the LSU MOA Museum Store for \$39.95. After the presentation, the artists will conduct a book signing.

Bayou Farewell

Celebrated travel writer Mike Tidwell reads from his book, *Bayou Farewell*

Saturday, Nov. 12, 7:30 pm
Location: LSU MOA, Paula Garvey Manship Floor (fifth), Shaw Center for the Arts

Meet Mike Tidwell, author of *Bayou Farewell: The Rich Life and Tragic Death of Louisiana's Cajun Coast* (Vintage Books: 2004). Tidwell will read from his moving chronicle about how Cajun society and culture is changing due to the vanishing wetlands.

Our Coast: Communicating a Complex Story

Panel discussion with Mike Tidwell, C.C. Lockwood and Mark Schleifstein in conjunction with the *Vanishing Wetlands: Two Views* exhibition.

Sunday, Nov. 13, 2:00–3:30 pm
Location: Manship Theatre, Shaw Center for the Arts

C.C. Lockwood is joined by Mike Tidwell, and Mark Schleifstein, award-winning environment reporter for *The Times-Picayune*, New Orleans. Jack M. Hamilton, dean of the Manship School of Mass Communication, will moderate this panel of passionate environmental commentators in a conversation about the social, economic and political impacts of Louisiana coastal erosion.

Mike Tidwell is the author of *Mountains of Heaven* and *Azaman Stranger*. His work has appeared in *National Geographic Traveler*, *Reader's Digest* and *The Washington Post*. Tidwell is the recipient of a National Endowment for the Arts fellowship and two Lowell Thomas Awards for travel journalism. He was born in Tennessee, raised in Georgia, and now lives in the Washington, D.C. area.

Mark Schleifstein has reported for *The Times-Picayune* since 1984, winning a number of awards, including the American Society of Civil Engineers' 2003 Excellence in Media award and the 2003

National Hurricane Conference media award for the series "Washing Away: How south Louisiana is growing more vulnerable to a catastrophic hurricane." His 1996 series, "Oceans of Trouble: Are the World's Fisheries Doomed?" won the 1997 Pulitzer Prize for public service.

This panel is organized by the LSU Museum of Art and the Reilly Center for Media & Public Affairs, Manship School of Mass Communication, Louisiana State University.

Wetlands Excursion

Saturday, November 5
9:00 am to 6:00 pm
\$70 per person; 46 people maximum; Advance reservations required

The LSU Museum of Art is aware of wetlands loss and the problem it poses to the future of Louisiana's coast. Seeing is believing! LSU MOA wants to make believers out of 46 curious and adventurous adults. Join museum staff on a day-long bus ride to Lafitte, Louisiana, where you will take an enlightening boat tour with Captain Cyrus Blanchard. Boxed lunches and refreshments will be provided. The focus of our journey is the wetlands and the many impacts of coastal erosion.

For information about LSU MOA public programs, contact Lara Gautreau, education curator, 225.389.7207; lgaut@lsu.edu.



1. Baton Rouge Symphony musicians entertain in the LSU MOA Hibernia Gallery with paintings as a backdrop at *River Views & Vibes*.

2. J.L. Nave, III, president and CEO, Baton Rouge Symphony, Laura Lindsay, interim executive director, LSU MOA, and Anthony S. Kurlas, director/vice president, Merrill Lynch at *River Views & Vibes*.

3. Pat and Cindy Cormier (Baton Rouge) and Peggy and George Alonzo (White Castle) enjoy the tastes and sounds of the first *River Views & Vibes*, underwritten by Merrill Lynch.

River Views & Vibes Sponsors



River Views & Vibes

A Hit with the After-Work Crowd

5:00 to 8:00 pm, First Thursday of the Month: September 1, October 6, November 3 & December 1, 2005
Location: LSU MOA, Paula Garvey Manship Floor (fifth), Shaw Center for the Arts

Over 100 people attended the first *River Views & Vibes* event on July 7th. The exuberant crowd enjoyed the fine art at the LSU Museum of Art while listening to the classic sounds of Baton Rouge Symphony performers. People mingled throughout the museum while sipping Tsunami's featured white wine of the week and sampling delicious Asian-fusion hors d'oeuvres, courtesy of Tsunami.

River Views & Vibes is an exciting new collaboration of the LSU MOA, the Baton Rouge Symphony and Tsunami. This fun, business-casual event is designed to bring art, music and relaxing networking opportunities to residents of Baton Rouge. *River Views & Vibes* is generously underwritten by Merrill Lynch, and proceeds support the programs of the LSU MOA and the Baton Rouge Symphony.

Admission is \$10 per person and may be paid at the door. LSU MOA members pay \$5.00. For information and group ticket purchases, contact Renee' Bourgeois, events coordinator: 225.326.7206; renee@lsu.edu or LeAnn Russo, Museum Store manager: 225.326.7210; lrusso@lsu.edu.

WILD WHEELS

Film Screening and
Lecture by Harrod Blank
Baton Rouge Art Car Parade

Saturday, October 1,
11:15 am – 2:00 pm
Location: Manship Theatre, Shaw Center for the Arts

The LSU Museum of Art is collaborating with Bill Kelley, director of the first Baton Rouge Art Car Parade, and a host of community partners and volunteers to present a lecture and film screening by California documentary filmmaker and art car maker, Harrod Blank. Blank will showcase the newest version of his film *WILD WHEELS*. Blank will talk about his adventures in the American art car community and will sign books, videos and DVDs that are available for purchase in the LSU MOA Museum Store.

Harrod Blank is the impresario of the art car film documentary. *The San Francisco Chronicle* film reviewer gushed: "*WILD WHEELS* is a zany ode to offbeat home-grown American art... One of the most joyous movie experiences I've had in some time." *The New York Times* critic said that *WILD WHEELS* is "a witty cinematic survey of American car art! Depending on one's tastes, one can come away with a yen to possess any of the more than 40 vehicles that are proudly paraded throughout the movie!"

What is an art car? People have been personalizing their cars ever

since the automobile was invented. Art car spectacles — where cars are elaborately decorated like works of art and paraded down boulevards by their highly creative owners — have been springing up across America since the 1980s. Houston's Art Car Parade began in 1987 and, 18 years later, is the most popular family event in the Houston area. Bill Kelley modeled the first Baton Rouge Art Car Parade on Houston's success. Event partners include the LSU MOA, the Baton Rouge Gallery Center for Contemporary Art, the Northgate Merchants Association, the LSU School of Art, EBRATS, Forum 35, the Downtown Development District and Plan Baton Rouge.

The Baton Rouge Art Car Parade begins at 10 am at the State Capitol parking lot, heads down Fourth Street, takes a right onto Convention Street and ends in front of the Shaw Center for the Arts. Parade goes and art car parade participants will meet Harrod Blank at the Shaw Center for the Arts where *WILD WHEELS* will screen in the Manship Theater at 11:15 am.

For information about the Baton Rouge Art Car Parade, contact Bill Kelley at artcarbr@hotmail.com; 225.336.9434. Contact Renee' Bourgeois at the LSU Museum of Art for information about Harrod Blank's visit and the *WILD WHEELS* film screening: 225.389.7206; renee@lsu.edu.

Harrod Blank's lecture and film presentation at the LSU Museum of Art is generously sponsored by ALL-STAR Automotive Group.





California filmmaker **Harrod Blank** with his musical art car *Pico De Gallo*. Photography: Hunter Mann

Donna McAlear a Jury Member for State of Louisiana Percent for Art Program

The State of Louisiana *Percent for Art Program* sent out a national call for artists to compete for a \$91,000 commission to produce a suspended, site-specific artwork for the lobby of the new Capitol Park Museum in downtown Baton Rouge. The contemporary building is designed by New Orleans architects Eskew, Dumez & Ripple. The lobby, built mainly of glass walls, will serve as a large reception area. Dr. Donna McAlear, deputy director, is honored to serve on the invitational jury who will select the final artwork. The jury met through the summer, and a finalist will be announced in the fall. The *Percent for Art Program* is administered by the Louisiana Division of the Arts, Office of Cultural Development, Department of Recreation and Tourism, Office of the Lt. Governor.

LSU Foundation Annual Members Meeting and Awards Banquet at LSU MOA

The LSU Foundation will hold its annual members meeting and awards banquet at the LSU Museum of Art on Friday,

November 4. The Foundation is LSU's primary academic fundraising organization. The invitation-only event recognizes LSU's top philanthropic supporters for the past year. More than \$13 million was channeled by donors through the LSU Foundation to fund the construction of the Shaw Center and the LSU Museum of Art.

Volunteer Opportunities

The Volunteer Support Organization (VSO) for the LSU Museum of Art will provide valuable assistance to the museum staff and the public. Volunteers will be trained to work in a range of visitor services functions, including special events hosting, LSU MOA Museum Store sales and public relations assistance. The museum also needs volunteers to work in collection management and general administration. The museum's education curator will train docent volunteers to engage the public in tours of the permanent collection and changing exhibitions. Contact Renee' Bourgeois, events coordinator, for more information: 225.389.7206; renee@lsu.edu.

Space Rentals

Designed to take full advantage of its magnificent location overlooking the Mississippi River, the LSU Museum of Art offers unique settings for special business and social events. A number of spaces are available for private events and corporate galas. Renee' Bourgeois, events coordinator, will be happy to provide you with a tour of the facilities and assist you with planning your distinctive event. Contact Renee' by telephone or by e-mail: 225.389.7206; renee@lsu.edu.

Programs and Group Tours

The LSU Museum of Art presents a range of programs and tours for adults and children. School programs for K-12 groups start October 11. Advance reservations are required. Adult groups are welcome by appointment. Contact Lara Gautreau, education curator, at 225.389.7207; lgaut@lsu.edu.

Dining

The Shaw Center for the Arts offers three dining destinations. Tsunami (225.346.5100) on the Irene W. Pennington Rooftop Terrace and Sculpture Garden blends unique cocktails and Asian-fusion dining with spectacular interior and outdoor views of the Mississippi River. Capital City Grill on beautiful Lafayette Park is a classic American eatery. PJ's Coffee on Lafayette and Convention Streets is a relaxing place for light dining.



A Glass Act: Juli Juneau



This quarter, the LSU MOA Museum Store highlights one of its most successful and exciting Louisiana artists. Juli Juneau originally hails from Charleston, South Carolina, and has made New Orleans her home since 1989. Juneau held her first solo exhibition at the Ritz Carlton, New Orleans, in December 2004. The show was a great success; she sold all 49 glass pieces.

Juneau admired the work of local New Orleans glass blowers and decided to study with them for two years. In 1999 she began creating wonderfully vibrant and sinuous glass objects. Juneau's work is inspired by her numerous travels and expeditions to 23 African countries. The colors and dress of the African women and the continent's geography and wildlife have greatly influenced the forms and intricate designs Juneau employs in her artwork.

Africa is such an important part of Juneau's life and art that she spent the year 2003 volunteering at the International AIDS Trust in Southern Africa. Stop by the LSU MOA Museum Store at the Shaw Center for the Arts to find a variety of her intricately colored glass artworks for ready purchase.



MUSEUM STORE

The LSU MOA Museum Store sells an array of boutique gifts for all family members, and exclusive jewelry, glass, ceramics, sculpture, and furniture by regional artisans.

Make Your Move.

Join the LSU Museum of Art Today!

- Annual membership in the LSU Museum of Art provides major support for museum exhibitions, educational programs, and the research, conservation, and expansion of the permanent collection.
- LSU MOA members receive free admission to the museum, a 10% discount on Museum Store purchases, the quarterly newsletter *Art Talk*, and an LSU MOA lapel pin. Members also receive a 15% discount on meals at the Capital City Grill for both locations (Lafayette Street Park, Shaw Center for the Arts and 3535 South Sherwood Forest Boulevard), a 10% discount on meals at Tsunami, and a free upsize on coffee purchases at PJ's Coffee, Shaw Center for the Arts.

Membership Levels and Benefits

PICK THE MEMBERSHIP LEVEL YOU WANT

All memberships include the benefits outlined above and those indicated by the levels below:

Student \$15

Single student membership (with verification of full-time enrollment).

Individual \$40

Membership for one adult.

Dual/Family \$60

Membership for up to two adults and children under 18.

Patron \$100

Dual/Family benefits plus invitations to special receptions and events and four guest passes.

Sustaining \$250

Patron benefits plus one gift from the Museum Store and an invitation to a behind-the-scenes tour of the museum.

Benefactor \$500

Sustaining benefits plus complimentary exhibition catalogues and invitations to opening receptions of all major exhibitions.

Endowment Society \$1,000

Benefactor level benefits plus invitation for two to the Endowment Society annual party and recognition in the museum.

Corporate Benefactor \$5,000

Dual/Family memberships for five adults, corporate recognition in the museum's quarterly newsletter, and invitations to opening receptions of all major exhibitions.

Corporate Philanthropist \$10,000

Dual/Family memberships for ten adults, corporate recognition in the museum's quarterly newsletter, and invitations to opening receptions of all major exhibitions.

WRITE NAME AS YOU WISH IT TO APPEAR IN OUR RECORDS AND ACKNOWLEDGMENTS:

MEMBER NAME AND TITLE

ADDRESS

CITY / STATE / ZIP

PHONE: HOME & WORK

EMAIL

Payment Options

PICK ONE

My check for _____ is enclosed.

MAKE CHECK PAYABLE TO: THE LSU FOUNDATION.

Please charge _____ to my:

AMERICAN EXPRESS DISCOVER

MASTER CARD VISA

ACCOUNT NUMBER

EXPIRATION DATE

NAME AS IT APPEARS ON CARD

SIGNATURE

For more information contact Kelly Lastrapes at 225.389.7212, klast@lsu.edu.

Return form and payment to:

LSU Museum of Art
Development Office
Shaw Center for the Arts
100 Lafayette Street
Baton Rouge, LA 70801

LSU faculty and staff receive a 10% discount on individual through benefactor level memberships.

LSU MOA Staff

Laura F. Lindsay, Executive Director
Donna G. McAlear, Deputy Director
Becky Adams, Administrator
Michael D. Robinson, Senior Director of Development
Kelly Lastrapes, Director of Development
Will G. Mangham, Director of Marketing
Renee' L. Bourgeois, Events Coordinator
Lara Gautreau, Education Curator
Frances R. Huber, Registrar
Bobbie F. Young, Assistant Registrar
Nathaniel Lakin, Preparator
LeAnn Russo, Museum Store Manager

Board Members

Chair: Sue Turner
Brenda Berg
Marvin Borgmeyer
Linda Bowsher
Mary Frey Eaton
Natalie Fielding
Ashley Fox-Smith
Carolyn Heard
Phillip Juban
Carol Lamar
Cornelius Lewis
Susan H. Lipsey
Charles McCowan
Paul Murrill
Nancy Robichaux
Michael D. Robinson
Jerry Schwing
Adele Silver
Kristin Sosnowsky
Rob Stuart
Boo Thomas
Leonard Wyatt
Honorary:
Nadine Carter Russell
Paula Garvey Manship
Ex-Officio: Laura F. Lindsay
Laura Boyce, LSU MOA Representative, Shaw Center for the Arts Board of Directors

Admission

Adults: \$ 8, Seniors 65+ and students with I.D.: \$ 6
LSU faculty/staff with I.D.: \$ 6
Children 5 to 17: \$ 4
Children under 5: Free

Hours

Tuesday to Saturday:
10:00 am to 5:00 pm
Thursday: 10:00 am to 8:00 pm
Sunday: 1:00 pm to 5:00 pm
Closed Mondays, Easter Sunday, Thanksgiving Day, Christmas Eve, Christmas Day and New Year's Day.



LSU Museum of Art
Shaw Center for the Arts
100 Lafayette Street
Baton Rouge, LA 70801

225.389.7200 (general)
225.389.7210 (Museum Store)
Internet: www.lsu.edu/lsumoa