

Art Talk

LESLEY DILL

*I Gave My Whole Life
to Words*

SEPTEMBER 6, 2013 –
JANUARY 19, 2014

FALL
TWO-THOUSAND THIRTEEN



Page 4+
Exhibitions

Page 8
Interview with
Sue Turner

Back Cover
Endowment
Society Soirée



Photo credit: Collin Ritchie

DEAR MEMBERS & FRIENDS,

Dear Members & Friends,

The LSU Museum of Art has been abuzz with energy and the sound of art in the making! On July 1, with generous support from Mayor-President Kip Holden's office, the Museum launched its Neighborhood Arts Project (NAP), a free community arts program for all ages. On Monday and Wednesday mornings, Coordinator of School and Community Programs Lucy Perera and a dedicated group of student interns set up tents in Old South Baton Rouge and Scotlandville, where they unpack art materials and unleash imaginations. We have been awestruck not only by the breadth of the programming but also by the number of volunteers who have shown up at our doorstep to learn from Lucy. To the Mayor, to the volunteers, and to the community members who have shared Lucy's vision, we are deeply grateful.

Our number of volunteers is growing, as is our membership. The Museum's recent campaign to attract lapsed members continues to be successful, with a 20 percent increase so far in the number of household memberships. If you're receiving this copy of *ArtTalk* at home, you are already aware of the benefits of Museum membership. Perhaps you have a friend or neighbor with whom you would be willing to share this copy and tell them about the value you find in supporting the exhibitions we stage, the programming we produce, and the contributions we make toward enriching Baton Rouge's cultural scene.

Our Museum can also throw a great party. We've had record turnouts recently, with more than 150 members attending our exhibitions' opening receptions. With our annual Fourth of July fundraiser, we took advantage of the magnificent view of the festivities that the Shaw Center for the Arts, our home, offers from its rooftop. Working in conjunction with Tsunami, the event drew 160 ticket-buyers who feasted on sushi and fried calamari, enjoyed the tunes of Ed Wills' band, Blues4Sale, and watched the fireworks from Baton Rouge's best river vista. A large part of the revenue from this event will go toward the Museum's curatorial and educational programming, which LSU does not fund, and we look forward to making the rooftop fundraiser a tradition that Baton Rougeans will mark on their calendars for years to come.

In my first *ArtTalk* Director's Message, I thanked you for your continuing support of the Museum, knowing full well that there are many worthy causes competing for your time and attention. Baton Rouge is a community brimming with artistic and pedagogic talent, yet it offers a limited number of venues in which to see, exhibit, and teach about art. The LSU Museum of Art has begun to see itself as a bridge among communities. I hope you already sense this change in our direction.

Sincerely,

Dr. Jordana Pomeroy

Executive Director
LSU Museum of Art

THANK YOU

Thank you to the following for their generous support of the Museum's exhibitions and programming:

Edward Pramuk: Seeing Music and An Eye on Jazz: Photographs by Herman Leonard

Louisiana Machinery Co.

The Robinson Family Fund

LSU College of Art + Design

Jeff & Leah McClain

10th Anniversary Art Melt Invitational

Jones Walker, L.L.P.

Forum 35

STUN Design

Stroubes Seafood & Steaks

Capital City Grill

DJ Otto

Walter Inglis Anderson: Everything I See Is New And Strange

The Charles Lamar Family Fund

Louisiana Machinery Co.

The Imo N. Brown Memorial Fund

Nedra Sue Davis & Nicole Pellitteri

An anonymous friend of the

LSU Museum of Art

Corporate Members

ABMB Engineers, Inc.

Ann Connelly Fine Art, LLC

Louisiana Culinary Institute

Taylor Clark Gallery

Newsletter & Design Sponsor

K-fx2 Design In Motion

Special thanks to . . .



The **Office of Mayor-President Melvin**

"Kip" Holden for his support of the LSU Museum of Art's Neighborhood

Arts Project. This summer, children

from communities of Scotlandville and Old South Baton Rouge participated in hands-on arts activities under the instruction of Coordinator of School and Community Programs, Lucy Perera.



ExxonMobil's Community Summer Jobs Program

Through this program, the Museum was able to hire intern Kim Jones to photograph works of art from our permanent collection. To read more about Kim and her internship, see Staff News on page 10.



Country Roads Magazine for their

generous in-kind support of our annual

4th of July Fundraiser and *I Gave My*

Whole Life to Words: Lesley Dill was made

possible in part by support from Country Roads, Celebrating 30 Years of Adventures Close to Home.

Our partners for our annual 4th of July Fundraiser:

Tsunami Baton Rouge and **Kleinpeter Dairy**.

Party goers were treated to the best sushi, mixed

grill and ice cream in town, and enjoyed the fireworks from downtown's most popular rooftop terrace. We are already looking forward next year!

Looking forward

The LSU Museum of Art has secured the exhibition *Toulouse-Lautrec and La Vie Moderne: Paris 1880 – 1910*, coming in the Fall of 2015. The exhibition will include 185 works of art and celebrates the work of avant-garde artists living in Paris during the end of the 19th and beginning of the 20th centuries.

This exhibition is organized and circulated by Art Services International, Alexandria, Virginia, and was secured thanks to the support of the following:

Liz Mangham

Roger & Marcia Moser

John & Virginia Noland

Miles & Mary Pollard

Cary Saurage

Joseph Simmons & Patricia Day

The Josef A. Sternberg Memorial Fund

Toulouse-Lautrec and La Vie Moderne: Paris 1880 – 1910 will allow for limitless programming that celebrates the French heritage and culture present in our community, city, region and the state of Louisiana. For more information on how you can support this exhibition, please contact Fairleigh Cook Jackson: fairleigh@lsu.edu or 225-389-7212.

The LSU Museum of Art relies on businesses, individuals and foundations to bring you the quality exhibitions and programming that enhance our community. To explore ways you can support your Museum, please contact Fairleigh Cook Jackson, Director of Museum Advancement, at fairleigh@lsu.edu or 225-389-7212.

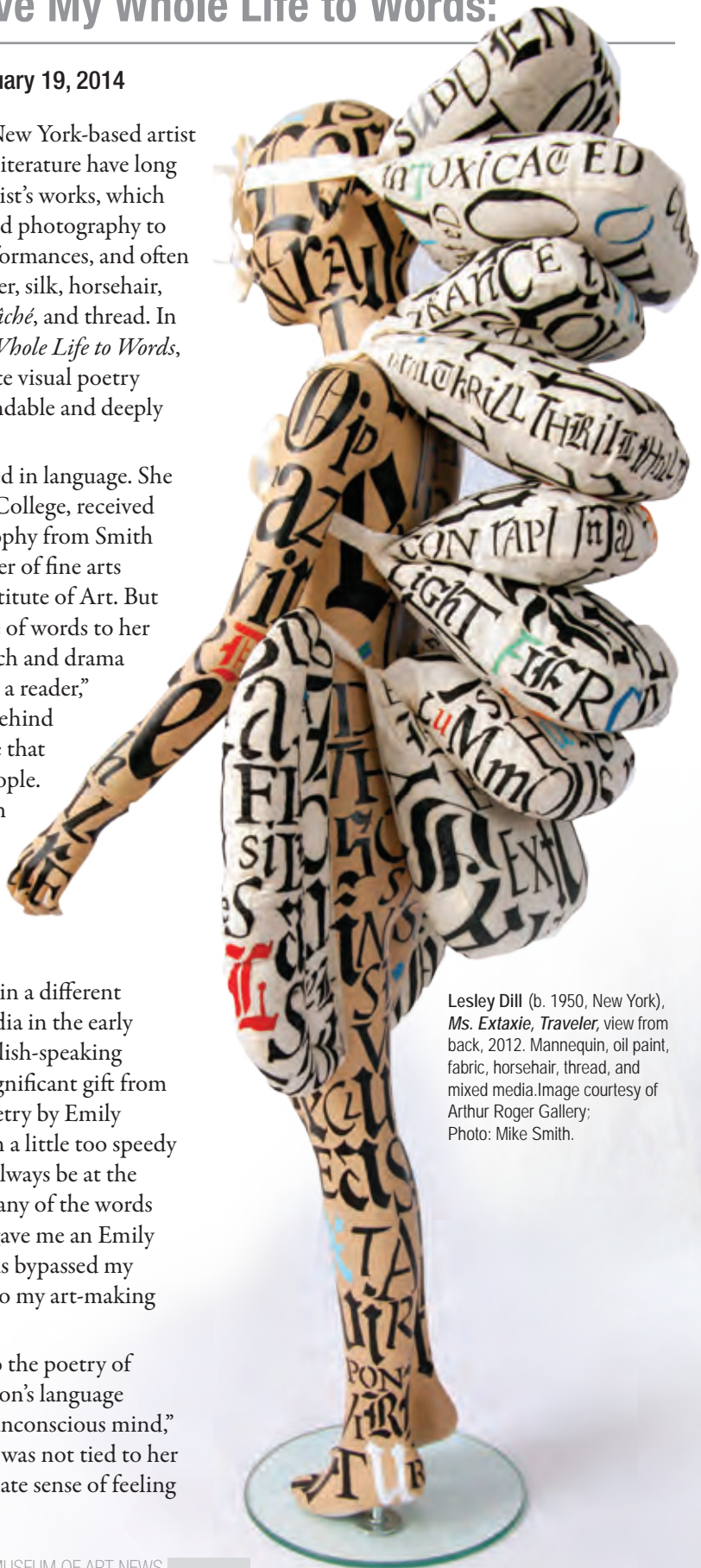
I Gave My Whole Life to Words:

September 6, 2013 – January 19, 2014

Few artists use words like New York-based artist Lesley Dill. Language and literature have long been intertwined in the artist's works, which range from printmaking and photography to sculpture and operatic performances, and often utilize charcoal, metal, paper, silk, horsehair, wire, sheer cloth, *papier-mâché*, and thread. In the exhibition *I Gave My Whole Life to Words*, Dill employs words to create visual poetry that is altogether understandable and deeply personal.

Dill has long been interested in language. She studied English at Trinity College, received a master's degree in philosophy from Smith College, and earned a master of fine arts degree at the Maryland Institute of Art. But she credits her lifelong love of words to her mother, a high school speech and drama teacher. "I had grown up as a reader," Dill explains. "The world behind the words was so real to me that words became like little people. They mean something, even if they're in a different language. Even if you don't understand them, they have a presence." Dill experienced this "sense of meaning" related to words in a different language while living in India in the early 1990s. Living in a non-English-speaking culture coincided with a significant gift from her mother – a book of poetry by Emily Dickinson. "I'd always been a little too speedy for poetry," Dill says. "I'd always be at the bottom of the page before any of the words sunk in. Then my mother gave me an Emily Dickinson book. Her words bypassed my intellect and went right into my art-making place."

Dill responded viscerally to the poetry of Emily Dickinson. "Dickinson's language released something in my unconscious mind," she explains. "My response was not tied to her content, but to the immediate sense of feeling



Lesley Dill (b. 1950, New York),
Ms. Extaxie, Traveler, view from
back, 2012. Mannequin, oil paint,
fabric, horsehair, thread, and
mixed media. Image courtesy of
Arthur Roger Gallery;
Photo: Mike Smith.

Lesley Dill

lined up with the experience of her words.”

Emily Dickinson is central to Dill’s work, but Dill also uses the words of authors such as Rainer Maria Rilke, Franz Kafka, Salvador Espriu, and Pablo Neruda. Dill does not simply illustrate text by these writers; she incorporates their poetic language into her mixed-media artworks, making the written word both signifier

and decorative motif—form and concept. Dill presents language in ways that are at times decipherable, and at other times illegible. In her *Extaxie* series, she creates garments that are covered in Gothic-style lettering. The inscrutable font and the jumbled letters force viewers to search for recognizable sentences and meanings. Her tea-stained wall hanging, *Double Poem Ghost*, very faintly reveals the words from Dickinson’s poem No. 540, which begins “I took my Power in my Hand.” Struggling to read becomes the meaning, reminding us that words fade from our ears and our mouths before they vanish from memory.

“Listening, reading, and looking are about taking in life,” Dill says. “Emily Dickinson said, ‘I heard as if I had no ear, until a vital word came all the way from life to me and then I knew I heard.’”

I Gave My Whole Life to Words will be on view at the LSU Museum of Art from September 6, 2013 through January 19, 2014. This exhibition is on loan from the Arthur Roger Gallery, New Orleans and is made possible in part by support from Country Roads, Celebrating 30 Years of Adventures Close to Home..

Lesley Dill is a speaker in the LSU College of Art+Design’s Distinguished Lecture Series.

Lesley Dill (b. 1950, New York),
Mr. Extaxie, Ardent, 2012.
Mannequin, oil paint, and mixed
media. Image courtesy of
Arthur Roger Gallery;
Photo: Mike Smith.



Lesley Dill (b. 1950, New York), *Extaxie Pup*, 2012.
Mannequin, oil paint, fabric, horsehair, thread, and mixed
media. Image courtesy of Arthur Roger Gallery;
Photo: Mike Smith.

Currently On Display

Walter Inglis Anderson: Everything I See Is New And Strange

On view through October 13, 2013

Walter Inglis Anderson: Everything I See Is New And Strange explores the works of celebrated artist, naturalist, and environmentalist Walter Inglis Anderson. Anderson illustrated the natural works vividly and with passion. His paintings, drawings, prints, pottery, and sculpture captured the flora and fauna of the Mississippi Gulf Coast. Over sixty years after their creation, Anderson's works continue to captivate the imaginations of viewers.

Walter Inglis Anderson: Everything I See New And Strange was developed by the Walter Anderson Museum of Art in conjunction with the family of Walter Anderson and is made possible in part by support from The Charles Lamar Family Fund, Louisiana Machinery, The Imo N. Brown Memorial Fund, and Nedra Sue Davis & Nicole Pellitteri and an anonymous friend of the LSU Museum of Art.



Walter Inglis Anderson (American, 1903-1965), *Two Blue Crabs*, c. 1960. Watercolor on paper. From the collection of the Walter Anderson Museum of Art in Ocean Springs, Mississippi.

New in the Galleries



Rashaad Newsome (b. 1979, New Orleans, LA), *Grand Duchess of Gainesville*, 2011. Single channel video, 2:34 min. © Marlborough Gallery, Rashaad Newsome.

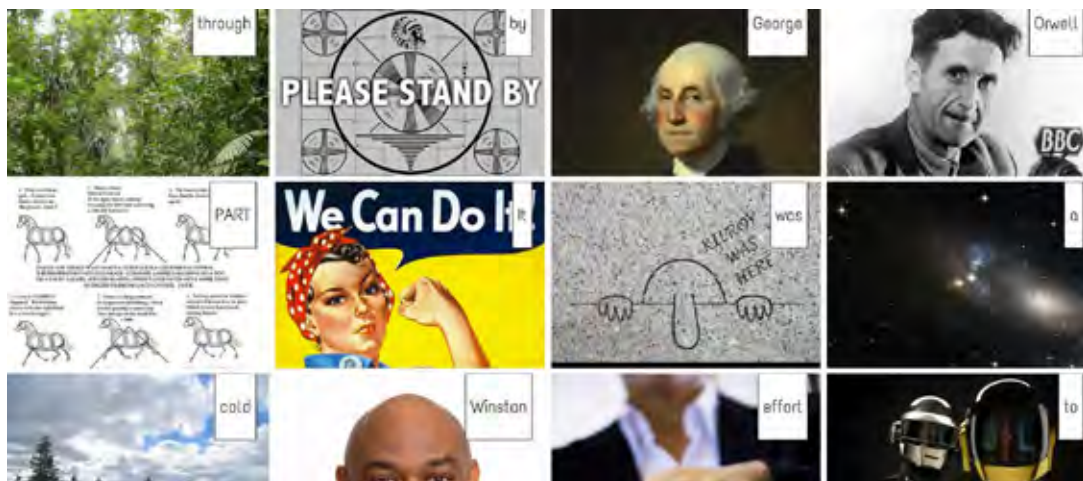
Portraiture: Style and Ornament

On view through January 2014

A native of New Orleans, Rashaad Newsome explores ornament, grandeur, and systems of heraldry in his videos *Painting Opponents Red* (2011, single channel video with sound, run time: 3:14 min.), *Grand Duchess of Gainesville* (2011, single

channel video with sound, run time: 2:34 min.), *Devices* (2011, single channel video with sound, run time: 3:30 min.), and *Dance of the Succubus* (2011, single channel video with sound, run time: 4:04 min.). Newsome draws inspiration from the art and design of Baroque Europe. Co-curated by Laura Blereau, this display of videos is placed in the Capital One Gallery in juxtaposition to portraits of aristocratic noblemen and kings from the LSU Museum of Art's permanent collection.

Opening Soon



Frederick "Derick" Ostrenko, 1984, 2013. HTML/Javascript web page. Image courtesy of the artist.

Right Here, Now

November 8, 2013 – February 16, 2014

LSU's art faculty educate within the walls of the university; outside they are also working artists who exhibit their works nationally. *Right Here, Now* features work by the School of Art's studio art faculty. More than 50 works by 23 current professors in the school's eight studio areas will be on view, including photography, painting and drawing, printmaking, graphic design,

foundations, sculpture, ceramics, and digital media. This is the first exhibition at the Museum to showcase the diverse talent of the LSU faculty in multiple media.

Shaw Center for the Arts Partners Alfred C. Glassell Jr. Exhibition Gallery, First Floor

September 12 – October 20

Show and Tell:

William Greiner

Reception: Thursday, September 12, 2013 6-8 p.m.

Photography and Short Stories about the Photographs

October 29 – December 8

Haejung Lee and Eunjung Shin:

Messages From the Other Side

Reception: Thursday, October 31, 6-8 p.m.

December 12-20

MFA Thesis Show: Rusty Durio

Reception: Saturday, December 14th, 6-8 p.m.

For more info contact Malia Krolak, gallery coordinator for the LSU School of Art, at 225-389-7180; artgallery@lsu.edu.

Sue Turner



In June, cultural philanthropist, activist, and long-time member of the LSU Museum of Art’s advisory board Sue Turner spoke with the Museum’s executive director, Jordana Pomeroy:

JP:How did you become interested in supporting cultural organizations?

ST: I was from a small town and, just after the War, about to be let loose in the world of the East Coast. I knew I didn’t have too much culture but I also knew it was good to look at art. I’d never been to a museum until we went to New York City, on the way from Boston. I was not too far from the Whitney. I walked in and asked the lady at the information desk what I should do, as I’d never been to a museum before. And I enjoyed what I saw. I liked the building itself.

JP:Getting people in the front door is still an issue for museums. What did the woman at the front desk tell you?

ST: “Hang up your raincoat!” I think I had the idea that only rich people went to museums, and I didn’t realize that it was

people who are sensitive to duty of a particular kind. It’s a little backward, but the more you learn about the things you don’t know about, the more interesting your life becomes. So, education and museums go hand in glove. And we certainly need as much education as we can get.

JP:What was the first project you worked on with Winnie Bird? Was that Magnolia Mound?

ST: No, it was before that. And we met other people who had the same interests in preservation, and learned that to accomplish anything, you need some support. I think when you’re given a lot you have an obligation to give back. When you’re young you have nothing to give but time, and when you are old enough to have something to give, you have less time.

JP:The two are both valuable, right?

ST: They’re both necessary.

JP:Charity is said to be a virtue beyond compare. What does it take to be an effective philanthropist and what advice would you give to young philanthropists in Baton Rouge?

ST: I think you have to start with education. You need to know a lot about the institution you plan to give to.

JP:How do you determine what you give? How do you do your research on an institution you plan to give to?

ST: I read about it and I ask other people why they go there. The institution has to be accessible—visitors should leave with the feeling that they have seen something exciting, beautiful, or different. This is especially important for those who don’t

On Cultural Philanthropy

typically have the pleasure of cultural things.

JP: You've been on the board of the LSU Museum of Art at least back to 2002, and now you're a board member emerita. What is your vision for our Museum?

ST: I think it's important to continue to have a balance between exhibiting objects from the past and the present, but also to utilize every phase of technology that improves the experience. There needs to be harmony between the people who can give their time, and those who can give their money.

JP: You've been on countless boards. What characterizes a good museum board member?

ST: I think it requires open-minded thinking. Not to think that you know it all and tell it all based on your own experience, but to listen, to learn more, and therefore be a better board member. You have to see how the institution operates so that you have a greater feeling for what an organization does and if it does its job well, which in turn makes you more inclined to support it. If I present an idea to the director and ultimately something comes of it, it must've been a good idea. If I never see or hear of it again, I figure I was wrong.

JP: I'm curious if your husband, Bert Turner cared for art.

ST: Actually, my husband's primary concern was seeing his own business succeed. He relied on Taylor Clark [of Taylor Clark Gallery] to advise him on purchases. He collected some Audubon prints, something that was meaningful to this region.

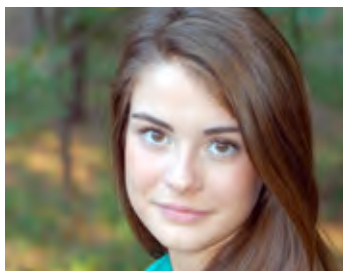
JP: Did you ever think about putting together a collection?

ST: Well I guess I collected but not with the intention of putting together a collection. In a way, collecting seems a little selfish. You can better share a picture when it's in a museum.

JP: If you had graduated from LSU a generation later, what do you think you might have become?

ST: Earlier in life, I wanted to be a writer. And now I'm mad with myself that I don't even write thank-you notes! I think that if you lay your head on your pillow at night and realize you made a contribution, that's a very satisfying feeling.

Staff News



Lauren Becker
(Student Intern)

The LSU Museum of Art welcomed Lauren Becker as our summer marketing student intern. As a congressional intern in Washington, DC, she had the opportunity to visit many of the national museums. In the process of compiling a travel guide for future interns, she gained an art education. Lauren moved from Houston to Baton Rouge in 2011 and is currently a senior at LSU, pursuing a degree in business management. She worked with Renee' B. Payton learning about marketing the Museum, coordinating events, and promoting facility rentals. The Museum staff wishes Lauren the best for her last year at LSU and she will be missed. Lauren will be working at the Pennington Bio-medical Research Center while attending classes.



Kim Jones
(Student Intern)

The LSU Museum of Art is grateful for ExxonMobil's Community Summer Jobs Program. Through this selective program, the Museum received a grant to fund summer intern Kim Jones' position as collections photographer. Kim, originally from Texas, received her BFA in photography from Texas Christian University and is currently a second-year graduate student in photography at LSU. This summer, Kim is photographing works of art from the Museum's permanent collection. These photographs will become part of an on-line gallery of the collection. Many will also be featured on Google Art beginning in September. "My experience as an intern at the LSU Museum of Art has been amazing!" Kim says, "I always look forward to being around all of the inspiring artwork as well as people who are very passionate about sharing their love for art." We are grateful to ExxonMobil for providing this wonderful opportunity for Kim and for the Museum.



Tanya Anderson

Please join us in congratulating Tanya Anderson for two significant achievements during her time here at the LSU Museum of Art. She joined us a year ago as the Museum's collections assistant and has now moved forward to become the Museum's assistant registrar. Tanya has also been accepted to George Washington University's graduate program in Museum Collections Management and Care. This program includes classes that cover such topics as legal and ethical issues surrounding museum collections and staff, preventative conservation and how to recognize when conservation is needed, and the basic principles of how to care for a museum's collection. Don't worry though; she is not going anywhere, as this is a distance education program. All classes are online, and all assignments can be completed at the LSU Museum of Art.

The LSU Museum of Art depends on volunteers to help fill the gaps. The new education department is in NEED of enthusiastic volunteers to assist with school and family programs. We will train you! Prior experience with children, teaching, art and the wonder of museums is a plus. If that is not for you, then there are ample opportunities to serve as museum store clerks, gallery attendants or assist with research, exhibition installation, public relations, events, and general office work. Consider volunteering your time. It is rewarding and fun. For more information, contact LeAnn Russo at 225-389-7211; lrusso@lsu.edu.



Be the first to know about upcoming events and exhibitions, meet new people, and find other great networks! Follow the LSU Museum of Art on Facebook and Twitter.

Neighborhood Arts Project



Exciting education programs abound at the LSU Museum of Art. In July, the Neighborhood Arts Project (NAP) popped up under tents in South Baton Rouge and Scotlandville, inspiring over 100 kids, teens, and families to participate each week.

Funded by Mayor-President Kip Holden, the NAP successfully filled a need

in Baton Rouge for a free accessible program based on the joy and wonder of creative exploration. Hats off to the amazing team of interns: Maghan Croxton, Juan Karlo Randolph, Yoshiko Miller, Tim Morgan, co-instructors, Casy Leatherman, Lauren Hegge; Youth Assistants: Keyna Dixon, Dominique Smith, Darren Smith, Jeronda Scott, Kyomeshe Powell, Sara Cage. We offer grateful thanks to Dr. Beverly Wade and Ms. Gloria Hall of the Avante Garde Society, Inc. who identified each site

and served as volunteers. NAP is only one way the LSU Museum of Art strives to influence and engage our community through the arts. This fall, we present four new initiatives: ARTWORKS, a partnership with White Hills Elementary bringing pre-kindergarten, kindergarten, and first graders to



the Museum throughout the school year; Homeschool Art, a program tailored to the learning needs of homeschool families; Art Explorations, multi-session studio classes taught by professional and LSU student artists; and Tell Me a Story, a literacy program for birth to pre-school age children. Look out for Saturday Arts and our new iPads loaded with apps and activities for

all ages. Finally after months of renovation, we will soon unveil the ARTLAB, a dedicated studio where museum learning becomes tangible through the creative hands-on process.

Membership

Student membership \$20

- one membership card with free admission to the Museum for one year available to any students currently enrolled in an accredited university or community college
- discounts at the Museum Store, local coffee houses, and local restaurants
- LSU MOA weekly e-blasts
- subscription to our quarterly newsletter, *ArtTalk*

(photocopy of student ID required with membership application)

**Please note our new Tiger Benefits: LSU faculty and staff receive 10% off all memberships at the Friend level and above.*

Friend \$50

- one membership card with free admission to the Museum for one year
- subscription to our quarterly newsletter, *ArtTalk*
- invitations to our members only opening receptions and annual meeting
- discounts on programs and special events
- Museum Store discount
- discounts at local restaurants and coffee houses

Family I \$75

- all Friend member benefits
- two membership cards with free admission for FOUR (two adults and two children under 18) to the Museum for one year

Family II \$ 100

- all Family I member benefits
- two membership cards with free admission for SIX (two adults and four children under 18) to the Museum for one year

Patron \$125

- all Family II member benefits
- reciprocal membership benefits at more than 600 museums with North American Reciprocal Museum Program (NARM)*

LSU MOA, Sustainer \$300

- all Patron member benefits
- four guest passes
- an invitation to a behind-the-scenes tour of the Museum and the permanent collection

Benefactor \$500

- all Sustainer member benefits
- invitations to exclusive tours of local artists' studios

Endowment Society \$1,000

- all Benefactor benefits
- special invitation to annual Endowment Society Social
- exclusive invitations to exhibition socials with the Director

Lifetime Endowment Society \$1,000 annually (commitment of 10 years)

- Endowment Society benefits
- name(s) inscribed on the Lifetime Endowment Society plaques in the Museum

Director's Circle \$5,000 & above

- Endowment Society benefits
- complimentary copies of museum exhibition publications
- exclusive invitations from the Director
- invitation to accompany the Director and other Director's Circle members on an exclusive arts adventure of travel and behind-the-scenes tours and visits to galleries and museums outside of our community

Corporate Partnerships

-The LSU Museum of Art welcomes and relies upon community business support. There are numerous opportunities for engagement: employee membership, educational programming underwriting, exhibition sponsorship, and many more. Partnerships may also include parking vouchers, private curatorial consultations, and dinner with the Provost. Please contact the Director of Museum Advancement, Fairleigh Jackson, for more information on Corporate Partnerships: 225-389-7212.

Remember the LSU Museum of Art

One of the simplest ways to provide for the future of the LSU Museum of Art is to remember us in your estate planning. If you are interested in planned giving for the Museum, please contact Fairleigh Jackson at 389-7212 or fairleigh@lsu.edu.

Thank You

Local businesses value LSU Museum of Art members too!

Special thanks to our local business partners who offer **BENEFITS** to our members:

- Capital City Grill
- CC's Coffee Houses
- Lokka Med Spa
- PJ's Coffee House, Shaw Center for the Arts
- Stroubes Seafood & Steaks
- Tsunami

For information on how you can support our membership program please contact **Fairleigh Cook Jackson:**
fairleigh@lsu.edu
or 225-389-7212

Becoming a member has never been easier! Call the Museum Store at 225-389-7210 to join over the phone, or visit www.lsumoa.org and print and mail your membership.

**North American Reciprocal Membership Program (NARM) Additional benefits are awarded through the NARM program to LSU MOA members at the Patron level and above. At more than 200 participating NARM museums, members enjoy: -Free admission to the permanent collection at listed museums during their regular hours -free admission to special exhibitions when no special ticket is required -entry for one person per membership card (a total of 2 persons) -Museum Store discounts -Discounts on ticketed events offered to museum members.*

Programs

September

- 01 First Free Sunday**
Free Admission
Fifth Floor, 1 – 5 p.m.
- 01 Discover the Collection:
Docent Tour**
Free Admission
Fifth Floor, 2 p.m.
Explore and learn about the LSU Museum of Art collection and exhibitions.
- 06 I Gave My Whole Life to Words:
Lesley Dill** opens to the public
- 06 Stories in Art**
Free Admission
Fifth Floor, 10:30 a.m.
A free program for babies through pre-school-age children, their parents, and their caregivers. Enjoy a story in the Museum galleries and activity.
- 08** Last day to see *10th Anniversary Art Melt Invitational*
- 08 Lecture: Conversing with History:
The Orléans Collection Arrives in Britain**
Free Admission
Fifth Floor, 2 p.m.
Join Dr. Jordana Pomeroy for a lecture to commemorate LSU Art History Professor Mark Zucker. Learn about the founding of London's National Gallery.
- 08 Book Signing with author Sherry Graves Smith**
Museum Store,
First Floor, 2 – 4 p.m.
Meet with Children's author Sherry Graves Smith for a signing of her book, *Mike's Game Day Rules*. LSU Mike the Tiger Mascot will be in the store to greet attendees.
- 14 Saturday Arts for Families:
Alphabet Art**
\$3 per child. Free for Family Level Museum Members
Fifth Floor, 10:30 a.m.
Be inspired by Walter Anderson's exhibition! Learn about the artist's life and passions, including his Alphabet Books. Then work in the ARTLAB Studio.
- 14 Art Exploration: Studio Series**
Call 225-389-7200 for information, pre-registration, and fees.
Fifth Floor, 1 – 3 p.m.
Explore printmaking in a two-part class for more in-depth learning about a variety of print processes.
- 19 MUSE, An Art Program for Homeschoolers**
Call for more information, pre-registration, and fees.
Fifth Floor, 1p.m.

- 22 Book Signing with author Peggy Sweeney-McDonald**
Museum Store,
First Floor, 2 – 4 p.m.
Meet with author and LSU Alumni Peggy Sweeney-McDonald for a signing of her book titled *Meanwhile, Back at Cafe Du Monde*.
- 26 Gallery Talk: Exploring the Walter Anderson exhibition with nature and wildlife photographer C.C. Lockwood.** Tickets \$15 for Museum Members; \$20 for Non-members
Fifth Floor, 6 - 8 p.m. Limited seating, call the Museum store at 225-389-7211 for more information. Refreshments will be served.
- 29 Walter Anderson, Realizations of An Artist** A Film by Winston Riley & David Wolfs
Museum Members free,
Non-members free with Museum admission
Fifth Floor, 2 p.m.

OCTOBER

- 04 Stories in Art**
Free Admission
Fifth Floor, 10:30 a.m.
A free program for preschoolers, their families, and their caregivers. Enjoy a story in the Museum galleries and activity.
- 05 Art Exploration: Studio Series for Kids**
Call 225-389-7200 for information, pre-registration, and fees.
Fifth Floor, 1 – 3 p.m.
Explore drawing in a two-part class for a more in-depth learning experience.
- 06 Free First Sunday**
Free Admission
Fifth Floor, 1 – 5 p.m.
- 06 Discover the Collection:
Docent Tour**
Free Admission
Fifth Floor, 2 p.m.
Explore and learn more about the LSU Museum of Art collection and exhibitions.
- 09 LSU College of Art + Design's Distinguished Lecture Series: Lesley Dill** LSU College of Art + Design first floor lecture hall (RM 103)
Free Admission
5:00 p.m.
- 12 Art Exploration: Studio Series for Kids**
Call 225-389-7200 for information, pre-registration, and fees.
Fifth Floor, 1 – 3 p.m.
Explore Printmaking in a two-part class for a more in-depth learning experience.

- 12 Saturday Arts for Families:
Book Art**
\$3 per child, Free to Family Level Museum Members
Fifth Floor, 10:30 a.m.
Be inspired by Walter Anderson's creative vision of the animal world. Explore the exhibition followed by a session in the ARTLAB Studio.
- 13** Last day to see *Walter Inglis Anderson: Everything I See Is New And Strange*.
- 17 MUSE, An Art Program for Homeschoolers**
Call for more information, pre-registration, and fees.
Fifth Floor, 1p.m.

NOVEMBER

- 01 Stories in Art**
Free Admission
Fifth Floor, 10:30 a.m.
A free program for preschoolers, their families, and their caregivers. Enjoy a story in the Museum galleries, and activity.
- 01/02 Dia De Los Muertos Altar**
Free with admission
Fifth Floor, 10 a.m. – 5 p.m.
Create or bring an offrenda for the LSU Museum of Art's Community Installation honoring All Soul's Day, in recognition of the lives of those who are no longer with us.
- 02 Saturday Arts for Families: Dia de los Muertos workshop**
\$3 per child. Free for Family Level Museum Members
Fifth Floor, 10:30 a.m.
Learn more about the history and tradition of this important celebration. Create puppets, masks, and more.
- 02/03 Art Exploration: Studio Series for Kids**
Call 225-389-7200 for information, pre-registration, and fees.
Fifth Floor, 1 – 3 p.m.
Explore sculpting in a two-part class for more in-depth learning about the wonder of three-dimensional mixed-media sculpture.
- 03 Free First Sunday**
Free Admission
Fifth Floor, 1 – 5 p.m.
- 03 Discover the Collection:
Docent Tour**
Free Admission
Fifth Floor, 2 p.m.
Explore and learn more about the LSU Museum of Art collection and exhibitions.
- 08 Right Here, Now** opens to the public.
- 21 MUSE, An Art Program for Homeschoolers**
Call for more information, pre-registration, and fees.
Fifth Floor, 1p.m.



The Irene W. Pennington Rooftop Terrace

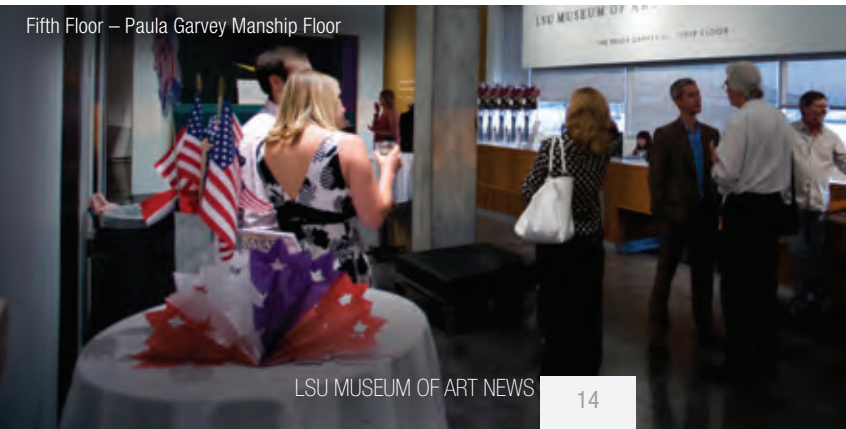
The Art of Event Planning

Planning the perfect event is an art—and it all begins with your choice of location. No other venue in the city offers choices between panoramic views of downtown and the Mississippi River or mingling among the region's finest works of art. The LSU Museum of Art offers a group of elegant yet functional settings for a variety of social, corporate, or nonprofit affairs. Our professional staff has hosted many wonderful events and will share a wealth of experience, creative expertise, and our premier vendor partners to ensure your event exceeds your expectations.



Third Floor – The Charles Phelps Manship, Jr. Floor

Magnificent spaces are available during the day and after normal business hours for guided tours, private evening events, and corporate galas, including receptions, meetings, and seated dinners. Let us give you a personal tour of the facilities to assist you in planning your event, please contact Renee' B. Payton at 225-389-7206; renee@lsu.edu



Fifth Floor – Paula Garvey Manship Floor

LSU Museum of Art Staff

- Dr. Jordana Pomeroy
Executive Director
Becky Abadie
Administrative Coordinator
Fairleigh Cook Jackson
Director of Museum Advancement
Associate Director of Development
Fran Huber
Assistant Director for Collections Management
LeAnn Dusang
Museum Store Manager
Lucy Perera
Coordinator of School and Community Programs
Natalie Mault
Curator
Reneé B. Payton
Coordinator, Events & Marketing of Facility Rentals
Rodneya M. Hart
Preparator
Tanya Anderson
Assistant Registrar

Board Members

- Chair: Fran Harvey
Secretary/Treasurer: John Godbee
- | | |
|--------------------|-----------------|
| Emalie Boyce | Marchita Mauck |
| E. John Bullard | Jeffery McLain |
| George Clark | Kenneth Miles |
| BarbaraAnne Eaton | Gail O'Quin |
| | Michael D. |
| Jerry Fischer | Robinson |
| Donna Fraiche | Emile Rolfs |
| Kelli Scott Kelley | Katherine Spaht |
| Sarah Kracke | Alkis Tsolakis |
| Liz Mangham | Barbara Zellmer |

- Honorary: Nadine Carter Russell
Ex-Officio: Jordana Pomeroy
Emerita: Sue Turner

Friends of LSU Museum of Art Board of Trustees

- President: Nedra Sue Davis
Vice President: Susannah Bing
Secretary/Treasurer:
Robert Bowsher
Norman Chenevert
Phillip Juban

Admission

- Adults & Youths 13+: \$5
University Faculty, Staff and Students with ID: Free
Children 12 & Under: Free
Museum Members: Free

Museum Hours

- Tues – Sat: 10 a.m. to 5 p.m.
Thurs: 10 a.m. to 8 p.m.
Sun: 1 p.m. to 5 p.m.
First Sunday of the Month: Free
Closed Mondays, Thanksgiving Day, Christmas Eve, Christmas Day and All Major Holidays

STAND RIGHT UP AND ROAR™

GEAUX Tigers!

Show your team spirit on GAME day by wearing your team colors in the LSU Museum Store and receive 25 percent off one item! The Museum Store has all kinds of goodies in purple in gold for your home or office. Check out our glass bowls by Juli Juneau, hand-painted tiger-eye wine glasses, and tiger-striped coasters, to name a few.

All are welcome, especially our small Tiger fans, at our book signing with children's author Sherri Graves Smith, author of "Mike's Game Day Rules" on Sunday, September 8, from 2 - 4 p.m.



Enjoy our exquisite jewelry and remarkable creations by local designers for all art lovers. You'll find amusing toys for kids and adults!

New Museum Store Hours

Tuesday – Saturday

12 noon – 8 p.m.

Sunday 1 p.m. – 5 p.m.



Please stop by and visit the LSU Museum of Art Museum Store to see works by dozens of Louisiana artists. You can always find that special gift and unique piece of art in the LSU Museum of Art Museum Store, located on the first floor of the Shaw Center for the Arts.



Fifth Floor
Shaw Center for the Arts
100 Lafayette Street
Baton Rouge, LA 70801



This fall the LSU Museum of Art kicks off its annual Endowment Society member campaign. We extend our thanks to Emile C. Rolfs, III for agreeing to chair this year's committee. This year's Endowment Society Soirée at the end of October promises to be a memorable evening that celebrates the Museum and its generous supporters. The purpose of the LSU Museum of Art's Endowment Society is to support the growth of the Museum of Art's Program Endowment Fund. For information on joining our Endowment Society and to learn about the many benefits of this membership, please contact Fairleigh Cook Jackson at fairleigh@lsu.edu or 225-389-7212.

