

ART TALK



12 | 09



FEATURE 3

Museum Director Auctions Own Car
Sue Turner Award

EXHIBITIONS 4+

Of People and Places: Contemporary Works
from the JPMorgan Chase Art Collection

VOLUNTEERS 7

Events, Talks, and Films

CALENDAR 8+

SAME GREAT NEWSLETTER,
just 20% smaller

Director's Message



OF PEOPLE AND PLACES: CONTEMPORARY WORKS FROM THE JPMORGAN CHASE ART COLLECTION WILL BE SHOWCASED AT THE LSU MUSEUM OF ART FROM SUNDAY, NOVEMBER 15, 2009, THROUGH VALENTINE'S DAY 2010. It offers a rare opportunity to view part of one of the greatest art collections ever assembled in corporate history. In 1959, David Rockefeller established the program which now consists of more than 30,000 works representing a worldwide scope, and which, in many respects, set the standards for corporate art collections to follow.

What I like about the JPMorgan Chase Art Collection is its willingness to take risks combined with an extraordinary amount of creativity. Add diversity of artists and media, not just for one market but for a global market, and you have a winning collection. It would have been a safe corporate bet to collect landscapes, floral paintings, and the occasional portrait to grace the offices and public areas within this financial organization. That's not what happened. Led by David Rockefeller, the Collection developed an edginess, a sense of originality, and an inspired creativity that led other corporations to take chances on contemporary art as well. Those early artists in the Collection — such as Sam Francis, Joan Mitchell, Jean Dubuffet, and Alexander Calder — have now made the transformation to modern masters, thanks in no small part to the willingness of corporations such as JPMorgan Chase to take a chance and collect art not merely with economic rationale, but with visual intelligence.

The selections coming to the LSU Museum of Art from the Collection include some of the biggest names in the visual arts for both the 20th and 21st centuries. There are silkscreen prints from Andy Warhol; a provocative man's suit (*Filzanzug*) by Joseph Beuys; photographs by Cindy Sherman, Ana Mendieta, Huma Bhabha, Kori Newkirk and Diane Arbus; paintings by David Bates; prints by Lorenz Estermann; and sculpture by Kenny Hunter. It is a challenging mix of visions and messages from artists around the globe.

We are most grateful to our local team that made the exhibition possible: Mr. Mark Bensabat, immediate-past CEO for JPMorgan Chase here in Baton Rouge; Mr. Kevin Kelty, CEO for JPMorgan Chase in Baton Rouge; Ms. Lisa K. Erf, Director of the JPMorgan Chase Art Collection; Mr. Jason Molchanow, Associate Curator for the Collection; Ms. Mary Durusau, JPMorgan Chase Community Relations Manager for Louisiana; Ms. Victoria Cooke, Assistant Director for Curatorial Affairs, LSU Museum of Art; Ms. Fran Huber, Assistant Director for Collections, LSU Museum of Art; and Ms. Natalie Mault, Assistant Curator, LSU Museum of Art.

Thomas A. Livesay
Executive Director
LSU Museum of Art

"...its willingness to take risks combined with an extraordinary amount of creativity."



Feature



Museum Director Auctions Own Car – Proceeds Given to LSU Museum of Art

Executive Director of the LSU MOA, Tom Livesay, has been driven to a desperate deed. He auctioned off his 1994 pearl-white 3000GT to supplement the museum's 20% budget cut. "I am auctioning off my two-door coupe in an attempt to raise some money for our under-funded university art museum," said Livesay. "One hundred percent of the proceeds go to the LSU Museum of Art." The car was auctioned on eBay, receiving over 2,900 viewings, 22 bids, and raising a sum of \$3,500. The money will be used to paint a gallery, host a children's educational program, pay a student employee, or help our great docents.

Sue Turner Award

Mayor-President Melvin "Kip" Holden was awarded the 2009 Sue Turner Award for Outstanding Commitment to the Arts. This award recognizes a committed individual who has made a significant difference in the community through artistic and cultural contributions and activities. Sue Turner was on hand to present the award to the Mayor.



LEFT TO RIGHT LSU MOA Director, Tom Livesay; Mayor-President Melvin "Kip" Holden; Sue Turner; LSU MOA Director of Development, Melissa Daly

ASK THE DIRECTOR

Offering advice in the visual arts since 2009

Q. When I come into the Museum it always seems unusually cold. Is there a reason for this? – *Freezing in the Galleries*

A. Dear *Freezing*, As you enter the galleries, you are experiencing optimum temperature conditions for works of art, which admittedly may not be the best conditions for you as your body struggles to adjust to the cold. Museums should keep temperature and relative humidity (RH) at specific levels that do not rapidly fluctuate. Our galleries, for example, are kept at 70° ± 2° temperature and 50% RH ± 5%. On one of our typical August – September days, when RH is seasonally at its worst and temperatures often climb into the 90s and beyond, the differences in indoor and outdoor temperatures can be startling. Monitored museum temperatures and RH levels protect the works of art in our collections, as well as pieces on loan to the Museum. More than anything else, museums do not want rapid fluctuations in either temperature or relative humidity. These affect works of art in a negative manner and can cause permanent damage.

Send your questions in the visual arts to: Director, LSU Museum of Art, 100 Lafayette Street, Baton Rouge, LA 70801.



COVER IMAGE: ANDY WARHOL (American, 1928–1987), *The Shadow*, 1981. Silkscreen with diamond dust on paper. From the JPMorgan Chase Art Collection. © Andy Warhol Foundation for the Visual Arts / ARS, NY / Courtesy Ronald Feldman Fine Arts, New York / www.feldmangallery.com / Courtesy of The JPMorgan Chase Art Collection

Not receiving e-mails about LSU Museum of Art upcoming events and promotions?
Contact Melissa Daly at 225-389-7212 or mdaly2@lsu.edu.

OF PEOPLE & PLACES

CONTEMPORARY WORKS FROM THE JPMORGAN CHASE ART COLLECTION

Open through February 14, 2010

Of People and Places is an exhibition of over 40 works from a global collection with great breadth and depth. People and places are major themes in the JPMorgan Chase art collection. Contemporary artists engage with these basic subjects across a diverse range of styles and techniques. Questions and dialogues about who we are as individuals and as communities, and what our relationship is with our changing environment — both natural and fabricated — are critical issues in the world today, regardless of culture or geography.

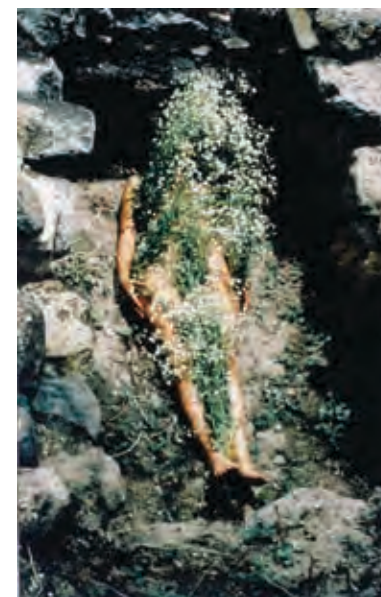
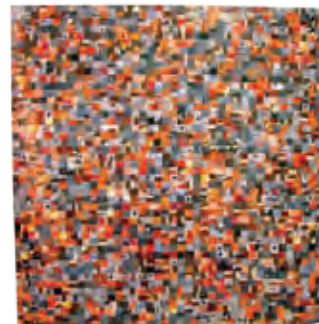
The human body and its environment exist as both physical and psychological conditions. **Andy Warhol**, **Joseph Beuys**, **Iñigo Manglano-Ovalle**, and **Kenny Hunter** isolate the figure, while **Vija Celmins**, **Richard Artschwager**, **Lorenz Estermann**, **Allen Ruppersberg**, **Jason Salavon**, and **Don Baum** concentrate solely on environment. Meanwhile, **Diane Nemerov Arbus**, **Cindy Sherman**, **Kori Newkirk**, **David Bates**, **Huma Bhabha**, **Charles LaBelle**, **Ana Mendieta**, **Jorge Pineda**, and **Mohammed Kazem** explore the dynamic relationship between people and place. These 19 artists all approach their subject matter with highly individual sensibilities, yet their diversity creates a broader world view.

Of People and Places: Contemporary Works from the JPMorgan Chase Art Collection was organized to celebrate the JPMorgan Chase Art Collection's 50th anniversary in 2009, which coincides with the LSU Museum of Art's 50th anniversary.



JPMorganChase 

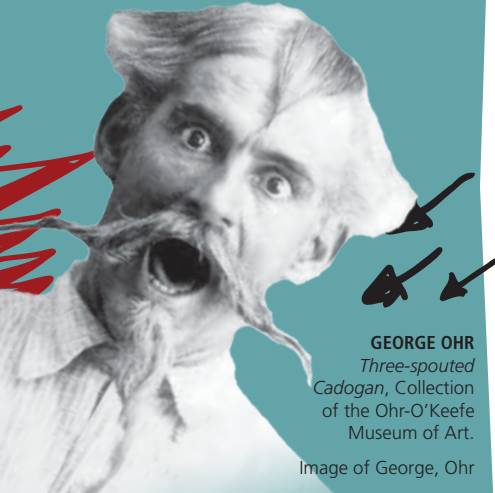
THIS PAGE: DON BAUM (American, 1922–2008), *Domus VI: Au Train*, 1981. Wood and tar paper. From the JPMorgan Chase Art Collection. © Don Baum / Courtesy of The JPMorgan Chase Art Collection. **NEXT PAGE TOP: HUMA BHABHA** (Pakistani, b. 1962), *Untitled*, 2005. C-print. From the JPMorgan Chase Art Collection. © ATM Gallery / Courtesy of The JPMorgan Chase Art Collection. **MIDDLE LEFT: CINDY SHERMAN** (American, b. 1954), *Untitled Film Still*, 1978. Gelatin silver print. From the JPMorgan Chase Art Collection. © Artist and Metro Pictures / Courtesy of The JPMorgan Chase Art Collection. **MIDDLE: ANA MENDIETA** (Cuban-American, 1948–1985), *Untitled* (Silueta Series, Mexico), 1973. Type C print. From the JPMorgan Chase Art Collection.



© The Estate of Ana Mendieta Collection / Courtesy Galerie Lelong, New York / Courtesy of The JPMorgan Chase Art Collection. **MIDDLE RIGHT: KENNY HUNTER** (British, b. 1962), *Standing Woman*, 2004. Glass reinforced plastic and paint. From the JPMorgan Chase Art Collection. © Courtesy Conner Contemporary Art / Courtesy of The JPMorgan Chase Art Collection. **BOTTOM: CHARLES LABELLE** (American, b. 1964), *Fieldworks – Silverlake*, 2005. Compound photograph – archival inkjet prints and tape. From the JPMorgan Chase Art Collection. © Traywick Contemporary / Courtesy of The JPMorgan Chase Art Collection.



Future Exhibitions
George Ohr Rising: The Emergence of an American Master
 From the Ohr-O'Keefe Museum of Art, Biloxi, Mississippi
 March 7 – August 1



GEORGE OHR
Three-spouted Cadogan, Collection of the Ohr-O'Keefe Museum of Art.
 Image of George, Ohr

Also at the Shaw Center for the Arts

Alfred C. Glassell Jr. Exhibition Gallery, Shaw Center for the Arts
 First Floor
 For more info contact Malia Krolak, gallery coordinator for the LSU School of Art, at 225-389-7180; artgallery@lsu.edu.

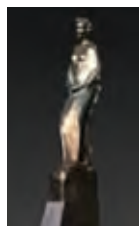
MFA Thesis Exhibitions: Jill Moore, Melissa Graves, Phillip Bastian
 December 15 — 18

LSU School of Art Faculty: Recent Work
 January 16 — February 7
 Reception: January 23, 6 p.m. — 8 p.m.

8 Fluid Ounces 2010: National Juried/Invitational Ceramic Cup Exhibition
 February 20 — March 21
 Reception: February 20, 6 p.m. — 8 p.m.

2009 New Acquisitions

BRAD BOURGOYNE (American, b. 1971), *Paula Garvey Manship*, 2006, Bronze. Gift of Bourgoyne Enterprises, Inc. in recognition of Paula G. Manship and her generous contributions to our community, 2009.1



JUDY COOPER (American, b. 1938), *Flamingo Cowboy*, 1996, Hand-tinted gelatin silver print. Purchased with funds from the Friends of LSU Museum of Art Endowment, 2009.2.1

JUDY COOPER (American, b. 1938), *Juanita* (from the series "New Orleans Sunday"), 2007, Color pigment print. Purchased with funds from the Friends of LSU Museum of Art Endowment, 2009.2.2

MICHAEL CRESPO (American, b. 1947), *Shore of Dreams*, 2008, Oil on linen. Gift of Michael Crespo, 2009.3

DOMINICK & HAFF, Newark & New York (manufacturers); retailed by Black, Starr & Frost, New York 6 fruit knives, ca. 1875-1890, Hand-hammered sterling silver with applied copper and gold. Gift of Mrs. Elizabeth Hassinger in memory of Mrs. Robert Bolton (Peggy Bolton), 2009.4.1-6

RUSSEL WRIGHT (American, 1904-1976), designer, Steubenville Pottery, Steubenville, OH, manufacturer, Partial set (37 pieces) of American Modern dinnerware, 1939-1959, Glazed earthenware. Given in memory of M. Dorothy Fletcher by her family, 2009.5.1-37



RUSSEL WRIGHT (American, 1904-1976), designer, Steubenville Pottery, Steubenville, OH, manufacturer, American Modern Salt and pepper shakers, 1939-1959, Glazed earthenware. Gift of Victoria Cooke in honor of Jerry Schwing, 2009.6.1-2

JANICE R. SACHSE (American, 1908-1998), *Cypress Knees*, c. 1985, Gouache on paper. Gift of Michael D. Robinson and Donald J. Boutté, 2009.7.1

CONRAD ALFRED ALBRIZIO (American, 1894-1973), *Landscape by the Water*, 1947, Watercolor on paper. Gift of Michael D. Robinson and Donald J. Boutté, 2009.7.2

JANICE R. SACHSE (American, 1908-1998), Unknown title, still life with fruit, 1961, Charcoal and pastel on paper. Gift of Michael D. Robinson and Donald J. Boutté, 2009.7.3



JANICE R. SACHSE (American, 1908-1998), [...] from *Cypress Stumps* [also called *Abstract Figures*], 1985, Gouache on paper with charcoal and graphite. Gift of Michael D. Robinson and Donald J. Boutté, 2009.7.4

CHRIS JOHNS, *Agitated by Water*, n.d., Acrylic on canvas. Purchased with funds from the Friends of LSU Museum of Art Endowment.



KELLI SCOTT KELLEY (American, b. 1961), *The Allies* (central panel of a triptych), 2008, Acrylic on stitched canvas. Purchased with funds from the Friends of LSU Museum of Art Endowment.

Coming Fall 2010

Caroline Durieux: A Radioactive Wit

The LSU Museum of Art's feature exhibition to mark LSU's sesquicentennial anniversary

Volunteer Opportunities at LSU Museum of Art

The LSU Museum of Art depends on volunteers to help fill the gaps. Opportunities are available to serve as docents, museum store clerks, gallery attendants, and Young Professionals. You can assist with research, exhibition installation, public relations, events, and general office work. Consider volunteering your time. For more information, contact Becky Adams, administrative coordinator, at 225-389-7201; radam14@lsu.edu.

Young Professionals of LSU MOA

www.lsumoa.com/yps

Join the YPs and get the most out of your museum membership. It's just one more way to support the arts in Baton Rouge.



The Young Professionals are on MySpace!

Be the first to know about upcoming events, check out our party pix, meet new people, and find other great networks! Become our friend on MySpace! www.myspace.com/lsumoa

GET INVOLVED!

Promote LSU MOA at community events... Help at LSU MOA programs... **and MORE!** Call 225-389-7212 for more information.

Volunteer Profile Frankie Poland

After growing up in Natchitoches, La., and graduating from Southern University, Frankie Poland worked for the Social Security Administration in Kansas City, Mo. She and her husband of 40 years, Emmett, later moved to his hometown of Baton Rouge. Poland has a degree in Interior Design from LSU.

What made you want to volunteer at the museum?

I have always had an affinity for the world of arts. I saw an ad in the Advocate needing volunteers at the LSU Museum of Art and I immediately inquired. Since I retired a little over 2 years ago, I have had plenty of time to devote to things I enjoy doing. This includes helping out at my church, volunteer work, my hobby of paper crafting, and enjoying the football season.

Are you involved in other volunteer work?

Yes. I volunteer as a "Reading Friend" with the Volunteers in Public Schools Program (VIPs).

What is your favorite thing about LSU MOA?

I enjoy the opportunity to see a wide variety of art works that I might not otherwise be exposed to.

What has been your favorite volunteering experience at LSU MOA?

To see all of the behind-the-scenes activities that are involved in preparing for exhibitions and being able to help out. In addition, the variety of different tasks I have been assigned.



DECEMBER

6
Free First Sunday
Free Admission, Fifth Floor

7
Museum Closed



14
Museum Closed



21
Museum Closed



28
Museum Closed



4
LSU MOA Museum
Store Holiday
Trunk Show
10a.m. – 8p.m., First Floor



JANUARY

3
Free First Sunday
Free Admission, Fifth Floor

4
Museum Closed

10
The Evolution of
Contemporary Art
2 p.m., Fifth Floor

11
Museum Closed

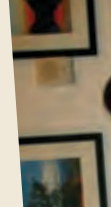
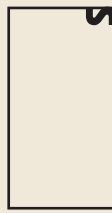


18
Museum Closed

24
Howdy Doody Day
2 p.m., Fifth Floor

25
Museum Closed

31
Curious About
Collecting?
2 p.m., Fifth Floor



1
Museum Closed



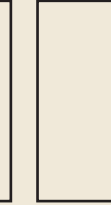
7
Free First Sunday
Free Admission, Fifth Floor

8
Museum Closed

14
Last day to see the
exhibition *Of People
and Places: Contem-
porary Works from
the JPMorgan Chase
Art Collection*
Free Admission, Fifth Floor

15
Museum Closed

22
Museum Closed



FEBRUARY

Events

DECEMBER

4 **LSU MOA Museum Store Holiday Trunk Show**
 10 a.m. — 8 p.m., First Floor *Still searching for that unique gift for the holidays? Look no further!* 'Tis the season at the Annual LSU MOA Museum Store Trunk Show. Meet local Louisiana artists displaying unique jewelry, pottery, woodworks, and paintings.

6 **Free First Sunday** Free Admission, Fifth Floor

JANUARY

6 **Free First Sunday** Free Admission, Fifth Floor

10 **The Evolution of Contemporary Art 2**
 p.m., Fifth Floor For many, contemporary art is confusing, even off-putting. It often does not seem to fit with art expectations as something pretty, realistic, and/or created by someone who is talented. Join us for this talk on contemporary art and find out how we arrived at this point in history where the idea is often greater than the product.

24 **Howdy Doody Day** Fifth Floor, 2 p.m. Andy Warhol's *Myths* series includes an image of television icon Howdy Doody. Although Howdy Doody was a staple for children growing up in the '40s and

'50s, time has robbed his freckled face of the celebrity Warhol acknowledged in his 1981 print. During your visit to the exhibition *Of People and Places*, enjoy some "Howdy Doody Time" and discover how one little marionette achieved mythical status.

Curious About Collecting? 2 p.m., Fifth Floor Have you ever thought about buying a piece of original art?

31 Or, maybe you have a piece or two and are now wondering how to grow your collection. Whatever stage of collecting you are in, getting advice from those in the know is always a good idea. Join us as collectors Bill Fagaly, Curator of African Art at NOMA, and Ben and Salomia Jeffers, long-time arts supporters, provide insights, cautions, and encouragement to those who are curious about collecting.

FEBRUARY

7 **Free First Sunday** Free Admission, Fifth Floor

14 **Last Day to see *Of People and Places: Contemporary Works from the JPMorgan Chase Art Collection*** Fifth Floor, 1 p.m. — 5 p.m.

Art in Action



*Host your special event at the
 LSU Museum of Art*

Looking for a refined and elegant venue to host your next special event? Whether your event calls for a standing reception or a seated dinner, the LSU Museum of Art can accommodate your entertaining needs with beauty and sophistication.

Members receive a 20% discount on all rentals.

For more information, please visit our web site at www.lsumoa.com. Or, for a tour of our facilities and help coordinating your event, please contact Renee B. Payton at 225-389-7206; renee@lsu.edu.

MOA News

Corporate Spotlight Whole Foods Market Baton Rouge

Serving the community since July 2005, Whole Foods Market Baton Rouge has partnered with many community organizations, including the LSU Museum of Art, donating thousands in funds and products to local non-profits. Whole Foods Market is one of LSU Museum of Art's corporate sponsors, and their management and staff have consistently gone above and beyond that financial commitment. We would not have many of our events and programming without their generous support. Thank you, Whole Foods Market Baton Rouge!

Donor Spotlight Rev. Howard Hall

Rev. Howard Hall, a retired priest of the Baton Rouge Diocese and current Spanish Town resident, has been a longtime supporter of and visitor to the LSU Museum of Art and the Shaw Center for the Arts. From his seminary involvement in the Notre Dame Art Guild to his constant presence at LSU Museum of Art exhibition openings, Rev. Hall supports and collects art, and he now proudly touts our new museum. Recently, he sought to make sure others could also enjoy his interests by making a contribution supporting the spring 2010 exhibition, *George Ohr Rising: The Emergence of an American Master*. He says, "One of my lifelong efforts has been to connect people and ideas, often in one little creative way at a time." Rev. Hall has been a member of the LSU Museum of Art since 2005 and is currently the lead sponsor of the *George Ohr Rising* exhibition.



Member Spotlight Dr. James Bishop

Dr. James Bishop is a research scientist in Kuwait, but that hasn't stopped him from being a patron member of the LSU Museum of Art since 2005. Bishop began visiting the museum in the late 1970's, during his graduate studies in Marine Sciences. He has since begun his own collection of Gullah baskets, Persian carpets, and Asian textiles. Bishop has been working in Kuwait since 1983, but he continues to visit the museum whenever he makes a trip to Baton Rouge. He stays informed on museum events via ArtTalk and shows his support for the museum from across the ocean.



WELCOME NEW MEMBERS

- | | | | |
|---------------------------|----------------------------|--------------------------|----------------------------|
| Jennifer and Case Ahr | Ms. Meg Holford | Ms. Lisa McRoberts | Mr. Brian Schneider |
| Mary and Jason Alford | Ms. Erin Horton | Ms. Amber Moreland | Ms. Susan S. Sklar |
| Ms. Carol Arabie | Ms. Julie Howard | Ms. Cara Moskot | Mr. Jeffrey Thomas |
| Mr. Anthony Bacala III | Ms. Ashley Johnson | Mr. Sean Muggivan | Ms. Jonalyn Timmons |
| Dr. Mary Banbury | Ms. Monica King | Ms. Stephanie Myers | Dale Treleaven and |
| Ms. Donna Barrere and | Ms. Colleen King | Mr. and Mrs. Doug Pechal | Kathy Morden |
| Mr. David Hopkins | Mr. Wade Latham | Ms. Shirley Poirrier | Ms. Liz Walker |
| Mr. Kyle Bauer | Mr. and Mrs. Rick LeCompte | Mr. James Pursifull | Ms. Megan Wesson |
| Mr. Trey Boudreaux | Clarke Lozes and Kay | Mr. Gerry Quaid | Linda West and Glynn White |
| Ms. Jessica Brooks | Mary Lozes | Ms. Courtney Rader | Mrs. Corine S. Wiggins |
| Ms. Camille Broome | Dianna and Chip Mann | Ms. Keren Ray | Ms. Gail Wilty |
| Ms. Stephanie Carroll | Mr. Francoise Marmillion | Abby and Joe Robinson | Mr. and Mrs. Frederick |
| Ms. Sara Courtney | Ms. Erica Leigh Martin | Mr. Joshua Rosby | Wisbar |
| Mr. and Mrs. Christopher | Mr. and Mrs. Trey McCowan | Mr. Jonathan Roundtree | M. Bibi and Jos |
| D'Elia | Mr. Tony McDonald and | Ms. Cassandra Roy | Wolke-Bronswijk |
| Ms. Jessica Edwards | Ms. Angela Broyard | Mr. Gerard A. Ruth | Mr. and Mrs. Jim Zietz |
| Ms. Marsanne Golsby | Ms. Margaret E. Mckerley | Ms. Kristin Sanders | |
| Mayor and Mrs. Kip Holden | Ms. Belinda McNeely | Mr. Timothy Schaeffer | |

Thank You

LSU MOA Corporate Members
JPMorgan Chase
Kleinpeter Farms Dairy
Taylor Clark Gallery
Whole Foods Market

George Ohr Rising Exhibition Sponsor
Rev. Howard Hall

Donations to Exhibition Fund
Howard Bagley
Maureen Bettman
Joseph Cilano
Lori Dowden
Bonnie Francois
Henry Gautreau
Grace Graugnard
Evelyn Heck
Richard Hess
Conville Lemoine
Lumina Newchurch
Martin Richard
Dorothy Standley

Donations to Development Fund
Marilyn Barbier
James Bishop
Stephen Black

Donation to Capital Campaign
The Shaw Group

Event Sponsors
LSU Dining
Coca Cola of Baton Rouge
Jambalaya Shoppe (Government Street)
Tsunami
Chef John Folse & White Oak Plantation
Community Coffee

Media Sponsors
City Social Magazine
Riverside Reader
Visit Baton Rouge BRACVB

Event Photos
Kamala Fontenot

In-Kind Donations
Noelie Harmon
Portofino Papers
Republic National

Newsletter and Design Sponsor
Stun Design and Advertising

Corporate Member & Sponsor Opportunities

Raise your corporate profile by sponsoring the LSU Museum of Art, or by becoming a Corporate Member. For more information contact Melissa Daly at 225-389-7212; mdaly2@lsu.edu.



LSU MOA Support Fund

PLEASE PRINT

I AM ENCLOSING MY CONTRIBUTION OF \$ _____ DATE _____

DONOR'S NAME _____

DONOR'S ADDRESS _____

IN HONOR OF _____

IN MEMORY OF _____ IS THIS DEATH RECENT? Yes No

ACKNOWLEDGE TO _____

ADDRESS _____

HOW IS HONOREE/DECEASED RELATED TO YOU? _____

HOW IS HONOREE/DECEASED RELATED TO RECIPIENT OF ACKNOWLEDGEMENT? _____

Payment Options pick one

MY CHECK FOR \$ _____ IS ENCLOSED. MAKE CHECK PAYABLE TO: THE LSU FOUNDATION.

PLEASE CHARGE \$ _____ TO MY: AMERICAN EXPRESS DISCOVER MASTER CARD VISA

ACCOUNT # / EXPIRATION DATE _____

NAME AS IT APPEARS ON CARD _____

SIGNATURE _____

The LSU MOA Support Fund provides a means for giving memorial and special gifts in recognition or remembrance of loved ones and friends. This is a wonderful way to honor someone on a special occasion, for a personal achievement, or for a life milestone. Contributions to the fund can be submitted via the Support Fund Form or by contacting the Development Office at 225-389-7212.

To find out more information on how to become a member of LSU MOA, contact Melissa Daly at 225-389-7212 or mdaly2@lsu.edu.

JOIN THE LSU MUSEUM OF ART TODAY!

Annual membership in the LSU Museum of Art provides major support for museum exhibitions, educational programs, and the research, conservation, and expansion of the permanent collection.

All LSU MOA members receive:

- Free admission to the museum,
- The quarterly newsletter ArtTalk,
- Discounts to programs and invitations to special events,
- 20% discount on Museum Store purchases and Museum rental space,
- 15% discount on meals at Capital City Grill for both locations,
- 10% discount on meals at Tsunami, Baton Rouge,
- 10% discount at all Baton Rouge area Community Coffee Houses, and
- Free upsizes on coffee purchases at PJ's Coffee, Shaw Center for the Arts.

MEMBER NAME & TITLE

ADDRESS

EMAIL

PHONE: HOME & WORK

Yes! I would like to join the Young Professionals of the LSU MOA, to help promote art and culture in Baton Rouge. CHECK TO RECEIVE AN EMAIL INVITATION TO OUR NEXT MEETING

Membership Levels

PICK THE MEMBERSHIP LEVEL YOU WANT

- Student \$15
- Individual \$40
- Dual/Family \$60

Special Donor Memberships

- Patron \$100
- Sustaining \$250
- Benefactor \$500
- Endowment Society \$1,000

Corporate Memberships

- Corporate Friend \$2,500
- Corporate Benefactor \$5,000
- Corporate Philanthropist \$10,000

FOR MORE INFORMATION, CONTACT THE MEMBERSHIP OFFICE AT 225-389-7213.

Return form and payment to:
 LSU Museum of Art
 Membership Office
 Shaw Center for the Arts
 100 Lafayette Street
 Baton Rouge, LA 70801

LSU faculty and staff receive a 10% discount on individual through benefactor-level memberships.

* NARM benefit allows members at the Patron level and above to receive reciprocal membership privileges at over 150 museums, gardens and historical sites throughout North America. Please refer to our web site, www.lsumoa.com for a complete listing of participating sites.

LSU MOA Staff

Tom Livesay, Executive Director
 Victoria Cooke,
 Assistant Director for Curatorial Affairs
 Melissa Daly, Director of Development
 Frances R. Huber, Assistant Director for
 Collections Management
 Becky Adams, Administrative Coordinator
 Lara Gautreau, Education Curator
 Reneé B. Payton, Marketing Director
 Natalie Mault, Assistant Curator
 Kevin Salzman, Preparator
 LeAnn Russo, Museum Store Manager

Board Members

Chair: Ashley Fox-Smith
 Vice Chair: Fran Harvey
 Secretary/Treasurer: Emalie Boyce
 Past Chair: Linda Bowsher
 Marvin Borgmeyer
 David Cronrath
 Heather Sewell Day
 Cheryl McKay Dixon
 Mary Frey Eaton
 Natalie Fielding
 Eugene Groves
 Cornelius Lewis
 Laura Lindsay
 Jeffery McLain
 Gail O'Quin
 Alison Rodrigue
 Emile Rolfs
 Jonathan Ryan
 Charles Schwing
 Honorary: Nadine Carter Russell
 Ex-Officio: Tom Livesay
 Emerita: Sue Turner

Admission

Adults: \$8, Seniors 65+ and students with I.D.: \$6
 LSU faculty/staff with I.D.: \$6
 Children 5 to 17: \$4
 Children under 5: Free

Hours

Tues - Sat: 10 a.m. to 4 p.m.
 Sun: 1 p.m. to 5 p.m.
 First Sunday of the Month: Free
 Closed Mondays, Thanksgiving Day,
 Christmas Eve, Christmas Day,
 and All Major Holidays



**LSU Museum of Art
 Shaw Center for the Arts**
 100 Lafayette Street
 Baton Rouge, LA 70801
 225-389-7200 (general)
 225-389-7210 (Museum Store)
www.lsumoa.com

Museum Store LSU MOA Museum Store 100 Lafayette Street, Baton Rouge, LA 70801 225-389-7210

The LSU MOA Museum Store

The Perfect Place for That Unique Gift!



Don't forget,
 members receive a
20% discount
 on all purchases.

Works by Charles G. Smith join an already stellar ensemble of creations by local artists in the LSU MOA Museum Store, providing another perspective on the natural beauty and culture of Louisiana.

Smith's works draw heavily from the plein air school of landscape painting, providing an evocative complement to the rest of the LSU MOA Museum Store's unique merchandise. He describes his work as "an attempt to open the viewer's eyes to the natural beauty that surrounds them" – certainly an apt description. Focusing on scenic landscapes in the Baton Rouge area, Smith deftly captures every detail of his subject, whether it is a summer sky, the streaking rays of a sunset, or the encroaching shadows along a tree line.

The LSU MOA Museum Store houses a broad selection of goods relating to present exhibitions, as well as a little bit of local flair. Whether you are looking for the latest work by your favorite local artist or a souvenir for the kids, the LSU MOA Museum Store has something to fit your needs.

Next time you are en plein air, stop by the LSU MOA Museum Store for a special gift they'll treasure always!

M
Manship Theatre

TO BUY TICKETS

ONLINE
www.manshiptheatre.org
 BY PHONE
 (225) 344-0334



LSU Museum of Art | Shaw Center for the Arts
100 Lafayette Street | Baton Rouge, LA 70801



GIVE THE GIFT THAT KEEPS ON GIVING...

LSU Museum of Art memberships are the perfect gift for the holiday season!

And don't forget to remember your loved ones this holiday season! Memorials and tributes are wonderful ways to remember family and friends, and to support the LSU Museum of Art. A notation of your gift will appear in the next issue of the ArtTalk newsletter.

Call 225-389-7212 or visit www.lsumoa.com for more information on memberships, gift memberships, and memorial donations.



IMAGE FROM THE EXHIBITION,

OF **PEOPLE & PLACES**

CONTEMPORARY WORKS FROM THE
JPMORGAN CHASE ART COLLECTION,
on display now through February 14, 2010.

ANDY WARHOL (American, 1928–1987), *Santa Claus*, 1981. Silkscreen with diamond dust on paper. From the collection of JPMorgan Chase. © Andy Warhol Foundation for the Visual Arts / ARS, NY / Courtesy Ronald Feldman Fine Arts, New York / www.feldmangallery.com